

AP0252

Leader in Biomolecular Solutions for Life Science



Phospho-Integrin beta 3 (ITGB3/CD61)-Y785 Rabbit pAb

Catalog No.: AP0252

Basic Information

Observed MW

100kDa

Calculated MW

87kDa

Category

Polyclonal Antibody

Applications

WB

Cross-Reactivity

Human,Mouse

Background

The ITGB3 protein product is the integrin beta chain beta 3. Integrins are integral cell-surface proteins composed of an alpha chain and a beta chain. A given chain may combine with multiple partners resulting in different integrins. Integrin beta 3 is found along with the alpha IIb chain in platelets. Integrins are known to participate in cell adhesion as well as cell-surface mediated signalling.

Recommended Dilutions

WB 1:500 - 1:1000

Immunogen Information

Gene ID

3690

Swiss Prot

P05106

Immunogen

Synthetic peptide. This information is considered to be commercially sensitive.

Synonyms

GT; GT2; CD61; GP3A; BDPLT2; GPIIIa; BDPLT16; BDPLT24; Phospho-Integrin beta 3 (ITGB3/CD61)-Y785

Contact



www.abclonal.com

Product Information

Source

Rabbit

Isotype

IgG

Purification

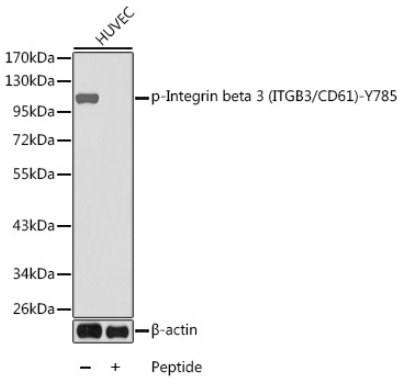
Affinity purification

Storage

Store at -20°C. Avoid freeze / thaw cycles.

Buffer: PBS with 0.02% sodium azide, 50% glycerol, pH7.3.

Validation Data



Western blot analysis of lysates from HUVEC cells using Phospho-Integrin beta 3 (ITGB3/CD61)-Y785 Rabbit pAb (AP0252) and the same antibody preincubated with blocking peptide.
Secondary antibody: HRP-conjugated Goat anti-Rabbit IgG (H+L) (AS014) at 1:10000 dilution.
Lysates/proteins: 25µg per lane.
Blocking buffer: 3% BSA.