

AP0250

Leader in Biomolecular Solutions for Life Science



Phospho-DOK2-Y299 Rabbit pAb

Catalog No.: AP0250

Basic Information

Observed MW

55kDa

Calculated MW

45kDa

Category

Polyclonal Antibody

Applications

WB,IF/ICC

Cross-Reactivity

Human

Background

The protein encoded by this gene is constitutively tyrosine phosphorylated in hematopoietic progenitors isolated from chronic myelogenous leukemia (CML) patients in the chronic phase. It may be a critical substrate for p210(bcr/abl), a chimeric protein whose presence is associated with CML. This encoded protein binds p120 (RasGAP) from CML cells.

Recommended Dilutions

WB 1:500 - 1:2000

IF/ICC 1:100 - 1:200

Immunogen Information

Gene ID

9046

Swiss Prot

O60496

Immunogen

Synthetic peptide. This information is considered to be commercially sensitive.

Synonyms

p56DOK; p56dok-2; Phospho-DOK2-Y299

Contact

 www.abclonal.com

Product Information

Source

Rabbit

Isotype

IgG

Purification

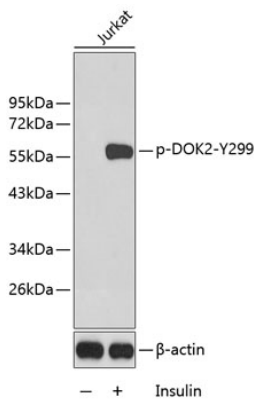
Affinity purification

Storage

Store at -20°C. Avoid freeze / thaw cycles.

Buffer: PBS containing 50% glycerol, preserved with proclin300 or sodium azide (as specified on the Certificate of Analysis), pH 7.3.

Validation Data



Western blot analysis of lysates from Jurkat cells using Phospho-DOK2-Y299 Rabbit pAb (AP0250).
Secondary antibody: HRP-conjugated Goat anti-Rabbit IgG (H+L) (AS014) at 1:10000 dilution.
Lysates/proteins: 25µg per lane.
Blocking buffer: 3% BSA.