

AP0248

Leader in Biomolecular Solutions for Life Science



Phospho-DOK1-Y362 Rabbit pAb

Catalog No.: AP0248

Basic Information

Observed MW

65kDa

Calculated MW

52kDa

Category

Polyclonal Antibody

Applications

WB

Cross-Reactivity

Human,Mouse,Rat

Background

The protein encoded by this gene is part of a signal transduction pathway downstream of receptor tyrosine kinases. The encoded protein is a scaffold protein that helps form a platform for the assembly of multiprotein signaling complexes. Several transcript variants encoding different isoforms have been found for this gene.

Recommended Dilutions

WB 1:500 - 1:2000

Immunogen Information

Gene ID

1796

Swiss Prot

Q99704

Immunogen

A phospho specific peptide corresponding to residues surrounding Y362 of human DOK1

Synonyms

pp62; P62DOK; Phospho-DOK1-Y362

Contact



www.abclonal.com

Product Information

Source

Rabbit

Isotype

IgG

Purification

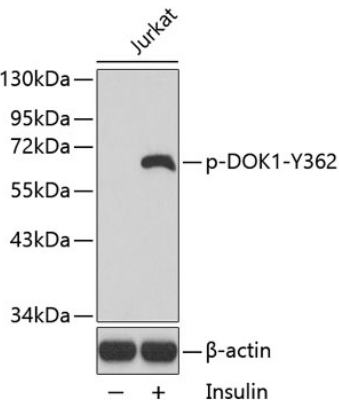
Affinity purification

Storage

Store at -20°C. Avoid freeze / thaw cycles.

Buffer: PBS with 0.02% sodium azide,50% glycerol,pH7.3.

Validation Data



Western blot analysis of extracts from Jurkat cells using Phospho-DOK1-Y362 antibody (AP0248).
Secondary antibody: HRP Goat Anti-Rabbit IgG (H+L) (AS014) at 1:10000 dilution.
Lysates/proteins: 25µg per lane.
Blocking buffer: 3% BSA.