

AP0240

Leader in Biomolecular Solutions for Life Science



Phospho-RELB-S573 Rabbit pAb

Catalog No.: AP0240

1 Publications

Basic Information

Observed MW

72kDa

Calculated MW

62kDa

Category

Polyclonal Antibody

Applications

WB

Cross-Reactivity

Human, Mouse

Background

Enables RNA polymerase II cis-regulatory region sequence-specific DNA binding activity and protein kinase binding activity. Involved in lymphocyte differentiation and negative regulation of interferon-beta production. Located in cytosol and nucleoplasm. Part of chromatin; nucleus; and transcription repressor complex. Colocalizes with centrosome. Implicated in breast cancer and immunodeficiency 53. Biomarker of breast cancer and transitional cell carcinoma.

Recommended Dilutions

WB 1:500 - 1:2000

Immunogen Information

Gene ID

5971

Swiss Prot

Q01201

Immunogen

Synthetic peptide. This information is considered to be commercially sensitive.

Synonyms

IREL; I-REL; IMD53; REL-B; Phospho-RELB-S573

Contact



www.abclonal.com

Product Information

Source

Rabbit

Isotype

IgG

Purification

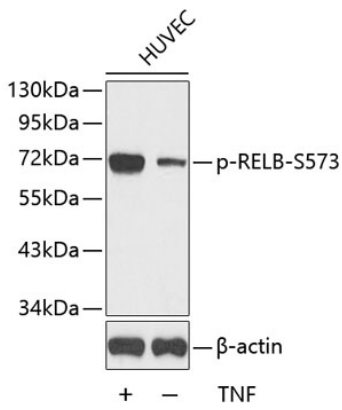
Affinity purification

Storage

Store at -20°C. Avoid freeze / thaw cycles.

Buffer: PBS with 0.02% sodium azide, 50% glycerol, pH 7.3.

Validation Data



Western blot analysis of lysates from HUVEC cells, using Phospho-RELB-S573 Rabbit pAb (AP0240).
Secondary antibody: HRP-conjugated Goat anti-Rabbit IgG (H+L) (AS014) at 1:10000 dilution.
Lysates/proteins: 25 μ g per lane.
Blocking buffer: 3% BSA.