

AP0223

Leader in Biomolecular Solutions for Life Science



# Phospho-EGFR-Y1197 Rabbit pAb

Catalog No.: AP0223

## Basic Information

### Observed MW

170kDa

### Calculated MW

134kDa

### Category

Polyclonal Antibody

### Applications

WB

### Cross-Reactivity

Human

## Background

The protein encoded by this gene is a transmembrane glycoprotein that is a member of the protein kinase superfamily. This protein is a receptor for members of the epidermal growth factor family. EGFR is a cell surface protein that binds to epidermal growth factor, thus inducing receptor dimerization and tyrosine autophosphorylation leading to cell proliferation. Mutations in this gene are associated with lung cancer. EGFR is a component of the cytokine storm which contributes to a severe form of Coronavirus Disease 2019 (COVID-19) resulting from infection with severe acute respiratory syndrome coronavirus-2 (SARS-CoV-2).

## Recommended Dilutions

WB 1:500 - 1:2000

## Immunogen Information

### Gene ID

1956

### Swiss Prot

P00533

### Immunogen

Synthetic peptide. This information is considered to be commercially sensitive.

### Synonyms

ERBB; ERRP; HER1; mENA; ERBB1; PIG61; NISBD2; Phospho-EGFR-Y1197

## Contact

 [www.abclonal.com](http://www.abclonal.com)

## Product Information

### Source

Rabbit

### Isotype

IgG

### Purification

Affinity purification

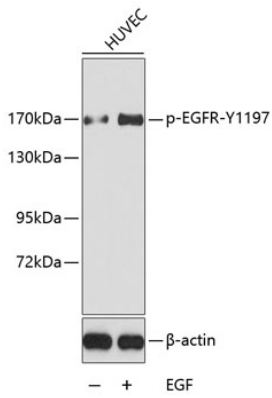
### Storage

Store at -20°C. Avoid freeze / thaw cycles.

Buffer: PBS containing 50% glycerol, preserved with proclin300 or sodium azide (as specified on the Certificate of Analysis), pH 7.3.

## Validation Data

---



Western blot analysis of lysates from HUVEC cells, using Phospho-EGFR-Y1197 Rabbit pAb (AP0223).

Secondary antibody: HRP-conjugated Goat anti-Rabbit IgG (H+L) (AS014) at 1:10000 dilution.

Lysates/proteins: 25 $\mu$ g per lane.

Blocking buffer: 3% BSA.