

AP0212

Leader in Biomolecular Solutions for Life Science



Phospho-NFKBIE-S22 Rabbit pAb

Catalog No.: AP0212

Basic Information

Observed MW

40kDa

Calculated MW

53kDa

Category

Polyclonal Antibody

Applications

WB

Cross-Reactivity

Human,Mouse

Background

The protein encoded by this gene binds to components of NF-kappa-B, trapping the complex in the cytoplasm and preventing it from activating genes in the nucleus. Phosphorylation of the encoded protein targets it for destruction by the ubiquitin pathway, which activates NF-kappa-B by making it available to translocate to the nucleus.

Recommended Dilutions

WB 1:500 - 1:2000

Immunogen Information

Gene ID

4794

Swiss Prot

O00221

Immunogen

Synthetic peptide. This information is considered to be commercially sensitive.

Synonyms

IKBE; Phospho-NFKBIE-S22

Contact

 www.abclonal.com

Product Information

Source

Rabbit

Isotype

IgG

Purification

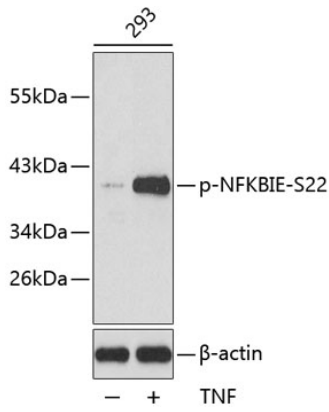
Affinity purification

Storage

Store at -20°C. Avoid freeze / thaw cycles.

Buffer: PBS with 0.02% sodium azide,50% glycerol,pH7.3.

Validation Data



Western blot analysis of lysates from 293 cells, using Phospho-NFKBIE-S22 Rabbit pAb (AP0212).

Secondary antibody: HRP-conjugated Goat anti-Rabbit IgG (H+L) (AS014) at 1:10000 dilution.

Lysates/proteins: 25µg per lane.

Blocking buffer: 3% BSA.