

AP0178

Leader in Biomolecular Solutions for Life Science



Phospho-CFL1-S3 Rabbit pAb

Catalog No.: AP0178

5 Publications

Basic Information

Observed MW

18kDa

Calculated MW

19kDa

Category

Polyclonal Antibody

Applications

WB,IHC-P,IF/ICC,ELISA

Cross-Reactivity

Human,Mouse,Rat

Background

The protein encoded by this gene can polymerize and depolymerize F-actin and G-actin in a pH-dependent manner. Increased phosphorylation of this protein by LIM kinase aids in Rho-induced reorganization of the actin cytoskeleton. Cofilin is a widely distributed intracellular actin-modulating protein that binds and depolymerizes filamentous F-actin and inhibits the polymerization of monomeric G-actin in a pH-dependent manner. It is involved in the translocation of actin-cofilin complex from cytoplasm to nucleus.

Recommended Dilutions

WB 1:500 - 1:2000

IHC-P 1:50 - 1:100

IF/ICC 1:100 - 1:200

ELISA Recommended starting concentration is 1 µg/mL. Please optimize the concentration based on your specific assay requirements.

Immunogen Information

Gene ID

1072

Swiss Prot

P23528

Immunogen

A synthetic phosphorylated peptide around S3 of human CFL1 (NP_005498.1).

Synonyms

CFL; cofilin; HEL-S-15; Phospho-CFL1-S3

Product Information

Source

Rabbit

Isotype

IgG

Purification

Affinity purification

Storage

Store at -20°C. Avoid freeze / thaw cycles.

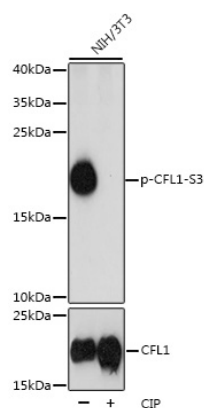
Buffer: PBS with 0.01% thimerosal, 50% glycerol, pH7.3.

Contact

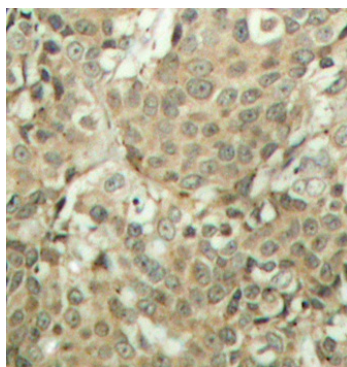


www.abclonal.com

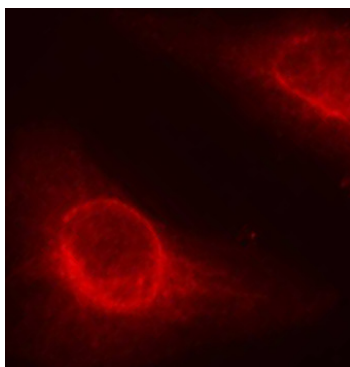
Validation Data



Western blot analysis of lysates from NIH/3T3 cells, using Phospho-CFL1-S3 Rabbit pAb (A1704). NIH/3T3 cells were treated by CIP(20uL/400ul) at 37°C for 1 hour. Secondary antibody: HRP-conjugated Goat anti-Rabbit IgG (H+L) (AS014) at 1:10000 dilution. Lysates/proteins: 25µg per lane. Blocking buffer: 3% BSA. Detection: ECL Basic Kit (RM00020). Exposure time: 3s.



Immunohistochemistry analysis of paraffin-embedded Human breast carcinoma tissue, using Phospho-CFL1-S3 Rabbit pAb (AP0178). Microwave antigen retrieval performed with 0.01M Tris/EDTA Buffer (pH 9.0) prior to IHC staining.



Immunofluorescence analysis of methanol-fixed HeLa cells using Phospho-CFL1-S3 Rabbit pAb (AP0178).