

AP0172

Leader in Biomolecular Solutions for Life Science



Phospho-FoxO1-S256 Rabbit pAb

Catalog No.: AP0172

10 Publications

Basic Information

Observed MW

82kDa/

Calculated MW

70kDa

Category

Polyclonal Antibody

Applications

WB,IF/ICC,ELISA

Cross-Reactivity

Human,Mouse,Rat

Background

This gene belongs to the forkhead family of transcription factors which are characterized by a distinct forkhead domain. The specific function of this gene has not yet been determined; however, it may play a role in myogenic growth and differentiation. Translocation of this gene with PAX3 has been associated with alveolar rhabdomyosarcoma.

Recommended Dilutions

WB 1:500 - 1:1000

IF/ICC 1:50 - 1:200

ELISA Recommended starting concentration is 1 µg/mL. Please optimize the concentration based on your specific assay requirements.

Immunogen Information

Gene ID

2308

Swiss Prot

Q12778

Immunogen

A synthetic phosphorylated peptide around S256 of human FoxO1 (NP_002006.2).

Synonyms

FKH1; FKHR; FOXO1A; Phospho-FoxO1-S256

Contact



www.abclonal.com

Product Information

Source

Rabbit

Isotype

IgG

Purification

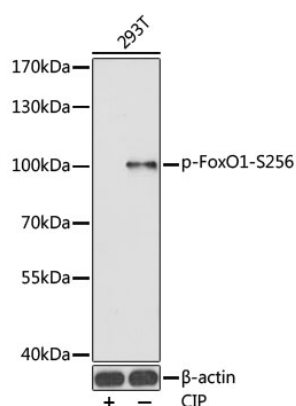
Affinity purification

Storage

Store at -20°C. Avoid freeze / thaw cycles.

Buffer: PBS with 0.05% proclin300,50% glycerol,pH7.3.

Validation Data



Western blot analysis of lysates from 293T cells, using Phospho-FoxO1-S256 Rabbit pAb (AP0172). 293T were treated by CIP (20ul CIP for each 400ul cell lysate) at 37°C for 1 hour.

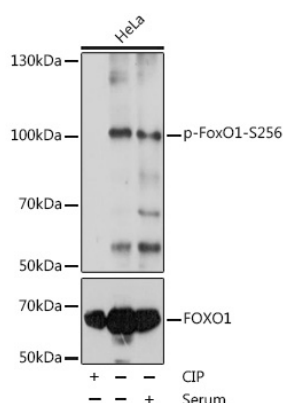
Secondary antibody: HRP-conjugated Goat anti-Rabbit IgG (H+L) (AS014) at 1:10000 dilution.

Lysates/proteins: 25μg per lane.

Blocking buffer: 3% BSA.

Detection: ECL Basic Kit (RM00020).

Exposure time: 90s.



Western blot analysis of lysates from HeLa cells, using Phospho-FoxO1-S256 Rabbit pAb (A13862). HeLa cell lysate were treated by CIP (20ul CIP for each 400ul cell lysate) at 37°C for 1 hour or treated by 10% FBS at 37°C for 30 minutes after serum-starvation overnight..

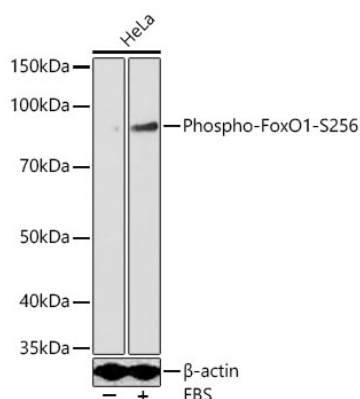
Secondary antibody: HRP-conjugated Goat anti-Rabbit IgG (H+L) (AS014) at 1:10000 dilution.

Lysates/proteins: 25μg per lane.

Blocking buffer: 3% BSA.

Detection: ECL Basic Kit (RM00020).

Exposure time: 2s.



Western blot analysis of lysates from HeLa cells using Phospho-FoxO1-S256 Rabbit pAb (AP0172) at 1:1000 dilution. HeLa cells were treated by 10% FBS at 37°C for 30 minutes after serum-starvation overnight.

Secondary antibody: HRP-conjugated Goat anti-Rabbit IgG (H+L) (AS014) at 1:10000 dilution.

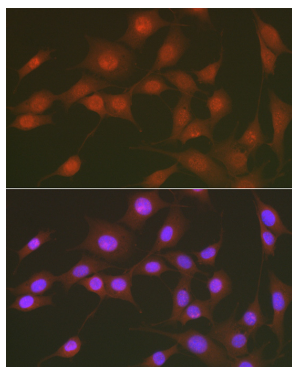
Lysates/proteins: 25 μg per lane.

Blocking buffer: 3% nonfat dry milk in TBST.

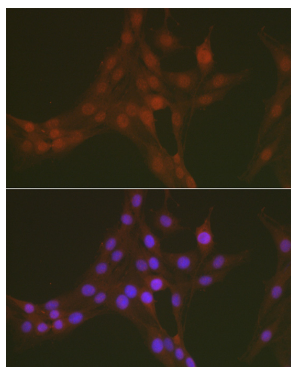
Detection: ECL Basic Kit (RM00020).

Exposure time: 30s.

Validation Data



Immunofluorescence analysis of NIH/3T3 cells using Phospho-FoxO1-S256 Rabbit pAb (AP0172) at dilution of 1:50. Secondary antibody: Cy3-conjugated Goat anti-Rabbit IgG (H+L) (AS007) at 1:500 dilution. Blue: DAPI for nuclear staining.



Immunofluorescence analysis of PC-12 cells using Phospho-FoxO1-S256 Rabbit pAb (AP0172) at dilution of 1:50. Secondary antibody: Cy3-conjugated Goat anti-Rabbit IgG (H+L) (AS007) at 1:500 dilution. Blue: DAPI for nuclear staining.