

AP0170

Leader in Biomolecular Solutions for Life Science



Phospho-Tau-S404 Rabbit pAb

Catalog No.: AP0170

13 Publications

Basic Information

Observed MW

65 kDa

Calculated MW

79 kDa

Category

Polyclonal Antibody

Applications

WB,IHC-P,IF/ICC,ELISA

Cross-Reactivity

Human,Mouse,Rat

Background

This gene encodes the microtubule-associated protein tau (MAPT) whose transcript undergoes complex, regulated alternative splicing, giving rise to several mRNA species. MAPT transcripts are differentially expressed in the nervous system, depending on stage of neuronal maturation and neuron type. MAPT gene mutations have been associated with several neurodegenerative disorders such as Alzheimer's disease, Pick's disease, frontotemporal dementia, cortico-basal degeneration and progressive supranuclear palsy.

Recommended Dilutions

WB 1:500 - 1:5000

IF/ICC 1:100 - 1:200

IHC-P 1:50 - 1:100

ELISA Recommended starting concentration is 1 µg/mL. Please optimize the concentration based on your specific assay requirements.

Immunogen Information

Gene ID

4137

Swiss Prot

P10636

Immunogen

Synthetic peptide. This information is considered to be commercially sensitive.

Synonyms

TAU; MSTD; PPND; DDPAC; MAPTL; MTBT1; MTBT2; tau-40; FTDP-17; PPP1R103; Tau-PHF6; Phospho-Tau-S404

Product Information

Source

Rabbit

Isotype

IgG

Purification

Affinity purification

Storage

Store at -20°C. Avoid freeze / thaw cycles.

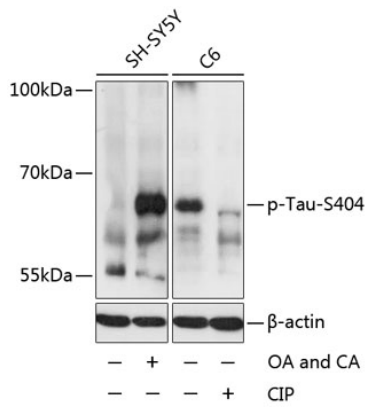
Buffer: PBS containing 50% glycerol, preserved with proclin300 or sodium azide (as specified on the Certificate of Analysis), pH 7.3.

Contact



www.abclonal.com

Validation Data



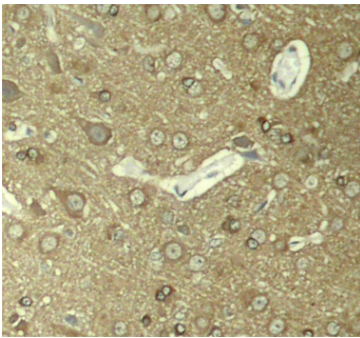
Western blot analysis of lysates from SH-SY5Y and C6 cells, using Phospho-Tau-S404 Rabbit pAb (AP0170) at 1:2000 dilution. SH-SY5Y cells were treated with Okadaic Acid (100nM) for 1 hour and Calyculin A (100nM) for 30 minutes after serum-starvation overnight. C6 cell lysates were treated with CIP at 37°C for 1 hour. Secondary antibody: HRP-conjugated Goat anti-Rabbit IgG (H+L) (AS014) at 1:10000 dilution.

Lysates/proteins: 25 μ g per lane.

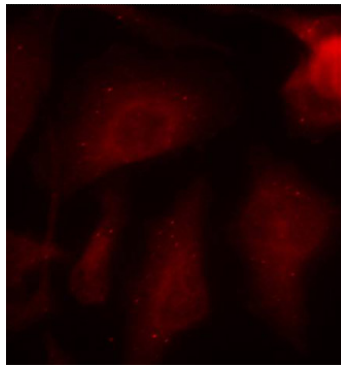
Blocking buffer: 3% BSA.

Detection: ECL Basic Kit (RM00020).

Exposure time: 3s.



Immunohistochemistry analysis of paraffin-embedded Rat hippocampal region tissue from a model with Alzheimer, using Phospho-Tau-S404 Rabbit pAb (AP0170). Microwave antigen retrieval performed with 0.01M Tris/EDTA Buffer (pH 9.0) prior to IHC staining.



Immunofluorescence analysis of methanol-fixed HeLa cells using Phospho-Tau-S404 Rabbit pAb (AP0170).