

AP0159

Leader in Biomolecular Solutions for Life Science



# Phospho-PKC mu-S910 Rabbit pAb

Catalog No.: AP0159

## Basic Information

---

### Observed MW

102kDa

### Calculated MW

102kDa

### Category

Polyclonal Antibody

### Applications

WB

### Cross-Reactivity

Human

## Background

---

The protein encoded by this gene is a serine/threonine protein kinase involved in many cellular processes, including Golgi body membrane integrity and transport, cell migration and differentiation, MAPK8/JNK1 and Ras pathway signaling, MAPK1/3 (ERK1/2) pathway signaling, cell survival, and regulation of cell shape and adhesion.

## Recommended Dilutions

---

WB 1:500 - 1:2000

## Immunogen Information

---

### Gene ID

5587

### Swiss Prot

Q15139

### Immunogen

A phospho specific peptide corresponding to residues surrounding S910 of human PKC mu

### Synonyms

PKD; PKCM; CHDED; PRKCM; PKC-MU; Phospho-PKC mu-S910

## Contact

---



[www.abclonal.com](http://www.abclonal.com)

## Product Information

---

### Source

Rabbit

### Isotype

IgG

### Purification

Affinity purification

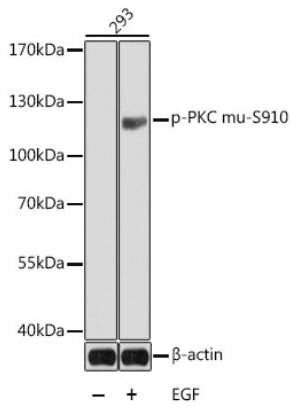
### Storage

Store at -20°C. Avoid freeze / thaw cycles.

Buffer: PBS with 0.02% sodium azide, 50% glycerol, pH7.3.

## Validation Data

---



Western blot analysis of extracts from 293, using Phospho-PKC mu-S910 antibody (AP0159).

Secondary antibody: HRP Goat Anti-Rabbit IgG (H+L) (AS014) at 1:10000 dilution.

Lysates/proteins: 25µg per lane.

Blocking buffer: 3% BSA.