

AP0155

Leader in Biomolecular Solutions for Life Science



Phospho-IGF1R-Y1165/Y1166 Rabbit pAb

Catalog No.: AP0155

Basic Information

Observed MW

100kDa

Calculated MW

155kDa

Category

Polyclonal Antibody

Applications

WB

Cross-Reactivity

Human,Mouse,Rat

Background

This receptor binds insulin-like growth factor with a high affinity. It has tyrosine kinase activity. The insulin-like growth factor I receptor plays a critical role in transformation events. Cleavage of the precursor generates alpha and beta subunits. It is highly overexpressed in most malignant tissues where it functions as an anti-apoptotic agent by enhancing cell survival. Alternatively spliced transcript variants encoding distinct isoforms have been found for this gene.

Recommended Dilutions

WB 1:500 - 1:2000

Immunogen Information

Gene ID

3480

Swiss Prot

P08069

Immunogen

Synthetic peptide. This information is considered to be commercially sensitive.

Synonyms

IGFR; CD221; IGFR; JTK13; Phospho-IGF1R-Y1165/Y1166

Contact

 www.abclonal.com

Product Information

Source

Rabbit

Isotype

IgG

Purification

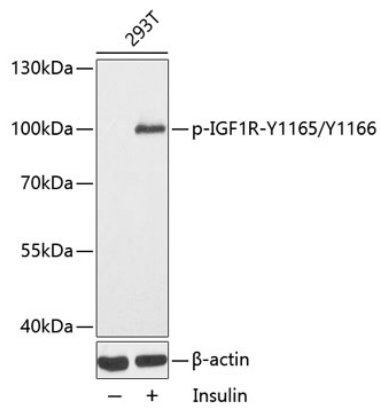
Affinity purification

Storage

Store at -20°C. Avoid freeze / thaw cycles.

Buffer: PBS with 0.02% sodium azide,50% glycerol,pH7.3.

Validation Data



Western blot analysis of lysates from 293T cells, using Phospho-IGF1R-Y1165/Y1166 Rabbit pAb (AP0155).
Secondary antibody: HRP-conjugated Goat anti-Rabbit IgG (H+L) (AS014) at 1:10000 dilution.
Lysates/proteins: 25µg per lane.
Blocking buffer: 3% BSA.