

AP0154

Leader in Biomolecular Solutions for Life Science



Phospho-EGFR-Y1092 Rabbit pAb

Catalog No.: AP0154

Basic Information

Observed MW

180kDa

Calculated MW

134kDa

Category

Polyclonal Antibody

Applications

WB

Cross-Reactivity

Human

Background

The protein encoded by this gene is a transmembrane glycoprotein that is a member of the protein kinase superfamily. This protein is a receptor for members of the epidermal growth factor family. EGFR is a cell surface protein that binds to epidermal growth factor, thus inducing receptor dimerization and tyrosine autophosphorylation leading to cell proliferation. Mutations in this gene are associated with lung cancer. EGFR is a component of the cytokine storm which contributes to a severe form of Coronavirus Disease 2019 (COVID-19) resulting from infection with severe acute respiratory syndrome coronavirus-2 (SARS-CoV-2).

Recommended Dilutions

WB 1:500 - 1:1000

Immunogen Information

Gene ID

1956

Swiss Prot

P00533

Immunogen

Synthetic peptide. This information is considered to be commercially sensitive.

Synonyms

ERBB; ERRP; HER1; mENA; ERBB1; PIG61; NISBD2; Phospho-EGFR-Y1092

Contact



www.abclonal.com

Product Information

Source

Rabbit

Isotype

IgG

Purification

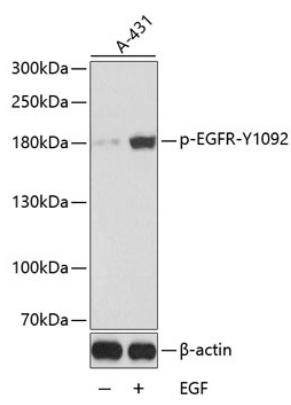
Affinity purification

Storage

Store at -20°C. Avoid freeze / thaw cycles.

Buffer: PBS with 0.02% sodium azide, 50% glycerol, pH7.3.

Validation Data



Western blot analysis of lysates from A431 cells, using Phospho-EGFR-Y1092 Rabbit pAb (AP0154).
Secondary antibody: HRP-conjugated Goat anti-Rabbit IgG (H+L) (AS014) at 1:10000 dilution.
Lysates/proteins: 25µg per lane.
Blocking buffer: 3% BSA.