

AP0135SP

Leader in Biomolecular Solutions for Life Science



Phospho-STAT1-Y701 Rabbit pAb

Catalog No.: AP0135SP **15 Publications**

Basic Information

Observed MW

84 kDa/91 kDa

Calculated MW

83 kDa/87 kDa

Category

Polyclonal Antibody

Applications

WB,ELISA

Cross-Reactivity

Human,Mouse,Rat

Background

The protein encoded by this gene is a member of the STAT protein family. In response to cytokines and growth factors, STAT family members are phosphorylated by the receptor associated kinases, and then form homo- or heterodimers that translocate to the cell nucleus where they act as transcription activators. The protein encoded by this gene can be activated by various ligands including interferon-alpha, interferon-gamma, EGF, PDGF and IL6. This protein mediates the expression of a variety of genes, which is thought to be important for cell viability in response to different cell stimuli and pathogens. The protein plays an important role in immune responses to viral, fungal and mycobacterial pathogens. Mutations in this gene are associated with Immunodeficiency 31B, 31A, and 31C.

Recommended Dilutions

WB 1:1000 - 1:2000

ELISA Recommended starting concentration is 1 µg/mL. Please optimize the concentration based on your specific assay requirements. For high-ratio antibody dilutions ($\geq 1:10000$)

Immunogen Information

Gene ID

6772

Swiss Prot

P42224

Immunogen

This information is considered to be commercially sensitive.

Synonyms

CANDF7; IMD31A; IMD31B; IMD31C; ISGF-3; STAT91; Phospho-STAT1-Y701

Contact

 www.abclonal.com

Product Information

Source

Rabbit

Isotype

IgG

Purification

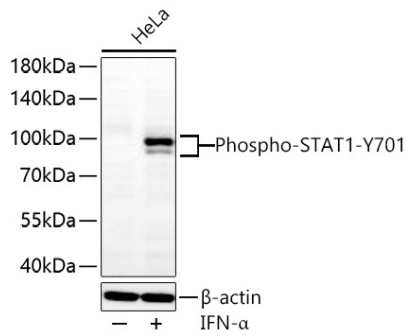
Affinity purification

Storage

Store at -20°C. Avoid freeze / thaw cycles.

Buffer: PBS, pH 7.3, containing 50% glycerol. Preserved with Proclin300 or sodium azide. May contain 0.05% BSA as specified on the Certificate of Analysis.

Validation Data



Western blot analysis of lysates from HeLa cells using Phospho-STAT1-Y701 Rabbit pAb (AP0135SP) at 1:1000 dilution incubated overnight at 4°C. HeLa cells treated with IFN- α (100 ng/mL) at 37°C for 30 minutes.

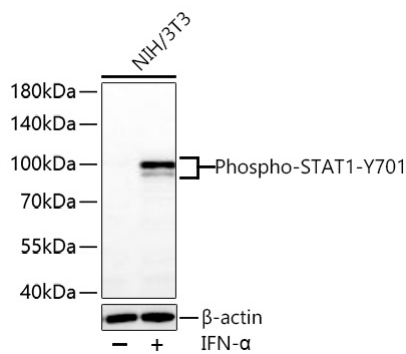
Secondary antibody: HRP-conjugated Goat anti-Rabbit IgG (H+L) (AS014) at 1:10000 dilution.

Lysates/proteins: 30 μ g per lane.

Blocking buffer: 3% nonfat dry milk in TBST.

Detection: ECL Basic Kit (RM00020).

Exposure time: 45 s.



Western blot analysis of lysates from NIH/3T3 cells using Phospho-STAT1-Y701 Rabbit pAb (AP0135SP) at 1:1000 dilution incubated overnight at 4°C. NIH/3T3 cells treated with IFN- α (100 ng/mL) at 37°C for 30 minutes.

Secondary antibody: HRP-conjugated Goat anti-Rabbit IgG (H+L) (AS014) at 1:10000 dilution.

Lysates/proteins: 30 μ g per lane.

Blocking buffer: 3% nonfat dry milk in TBST.

Detection: ECL Basic Kit (RM00020).

Exposure time: 45 s.