

AP0133

Leader in Biomolecular Solutions for Life Science



Phospho-ELK1-S389 Rabbit pAb

Catalog No.: AP0133

Basic Information

Observed MW

44kDa

Calculated MW

45kDa

Category

Polyclonal Antibody

Applications

WB

Cross-Reactivity

Human,Mouse,Rat

Background

This gene is a member of the Ets family of transcription factors and of the ternary complex factor (TCF) subfamily. Proteins of the TCF subfamily form a ternary complex by binding to the the serum response factor and the serum response element in the promoter of the c-fos proto-oncogene. The protein encoded by this gene is a nuclear target for the ras-raf-MAPK signaling cascade. This gene produces multiple isoforms by using alternative translational start codons and by alternative splicing. Related pseudogenes have been identified on chromosomes 7 and 14.

Recommended Dilutions

WB 1:500 - 1:2000

Immunogen Information

Gene ID

2002

Swiss Prot

P19419

Immunogen

A phospho specific peptide corresponding to residues surrounding S389 of human ELK1

Synonyms

ELK1; Phospho-ELK1-S389

Contact



www.abclonal.com

Product Information

Source

Rabbit

Isotype

IgG

Purification

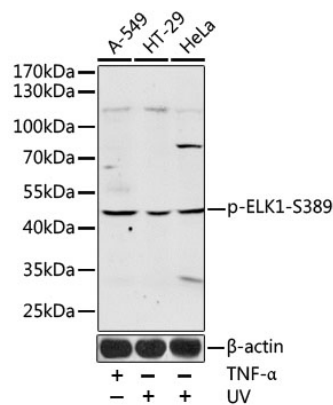
Affinity purification

Storage

Store at -20°C. Avoid freeze / thaw cycles.

Buffer: PBS with 0.02% sodium azide,50% glycerol,pH7.3.

Validation Data



Western blot analysis of extracts of various cell lines, using Phospho-ELK1-S389 antibody (AP0133) at dilution.
Secondary antibody: HRP Goat Anti-Rabbit IgG (H+L) (AS014) at 1:10000 dilution.
Lysates/proteins: 25µg per lane.
Blocking buffer: 3% nonfat dry milk in TBST.