

AP0051

Leader in Biomolecular Solutions for Life Science



Phospho-ERK3-S189 Rabbit pAb

Catalog No.: AP0051

1 Publications

Basic Information

Observed MW

120kDa

Calculated MW

83kDa

Category

Polyclonal Antibody

Applications

WB,ELISA

Cross-Reactivity

Human,Mouse,Rat

Background

The protein encoded by this gene is a member of the Ser/Thr protein kinase family, and is most closely related to mitogen-activated protein kinases (MAP kinases). MAP kinases also known as extracellular signal-regulated kinases (ERKs), are activated through protein phosphorylation cascades and act as integration points for multiple biochemical signals. This kinase is localized in the nucleus, and has been reported to be activated in fibroblasts upon treatment with serum or phorbol esters.

Recommended Dilutions

WB 1:500 - 1:2000

ELISA Recommended starting concentration is 1 µg/mL. Please optimize the concentration based on your specific assay requirements.

Immunogen Information

Gene ID

5597

Swiss Prot

Q16659

Immunogen

A synthetic phosphorylated peptide around S189 of human ERK3 (NP_002739.1).

Synonyms

ERK3; PRKM6; p97MAPK; HsT17250; Phospho-ERK3-S189

Contact



www.abclonal.com

Product Information

Source

Rabbit

Isotype

IgG

Purification

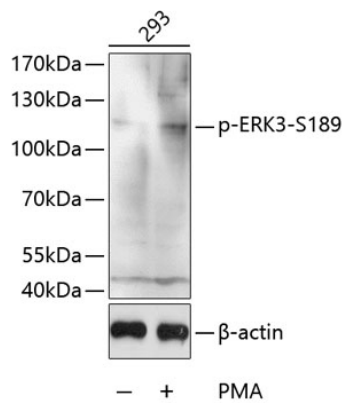
Affinity purification

Storage

Store at -20°C. Avoid freeze / thaw cycles.

Buffer: PBS with 0.02% sodium azide,50% glycerol,pH7.3.

Validation Data



Western blot analysis of lysates from 293 cells, using Phospho-ERK3-S189 Rabbit pAb (AP0051) at 1:1000 dilution. 293 cells were treated by PMA/TPA (200nM) for 30 minutes after serum-starvation overnight.

Secondary antibody: HRP-conjugated Goat anti-Rabbit IgG (H+L) (AS014) at 1:10000 dilution.

Lysates/proteins: 25µg per lane.

Blocking buffer: 3% BSA.