

AP0025

Leader in Biomolecular Solutions for Life Science



www.abclonal.com

# Phospho-EGFR-T669 Rabbit pAb

Catalog No.: AP0025

1 Publications

## Basic Information

### Observed MW

200kDa

### Calculated MW

134kDa

### Category

Polyclonal Antibody

### Applications

WB,IP,ELISA

### Cross-Reactivity

Human

## Background

The protein encoded by this gene is a transmembrane glycoprotein that is a member of the protein kinase superfamily. This protein is a receptor for members of the epidermal growth factor family. EGFR is a cell surface protein that binds to epidermal growth factor, thus inducing receptor dimerization and tyrosine autophosphorylation leading to cell proliferation. Mutations in this gene are associated with lung cancer. EGFR is a component of the cytokine storm which contributes to a severe form of Coronavirus Disease 2019 (COVID-19) resulting from infection with severe acute respiratory syndrome coronavirus-2 (SARS-CoV-2).

## Recommended Dilutions

**WB** 1:500 - 1:2000

**IP** 0.5µg-4µg antibody for  
200µg-400µg extracts  
of whole cells

**ELISA** Recommended starting  
concentration is 1  
µg/mL. Please optimize  
the concentration  
based on your specific  
assay requirements.

## Contact

 [www.abclonal.com](http://www.abclonal.com)

## Immunogen Information

### Gene ID

1956

### Swiss Prot

P00533

### Immunogen

Synthetic peptide. This information is considered to be commercially sensitive.

### Synonyms

ERBB; ERRP; HER1; mENA; ERBB1; PIG61; NISBD2; Phospho-EGFR-T669

## Product Information

### Source

Rabbit

### Isotype

IgG

### Purification

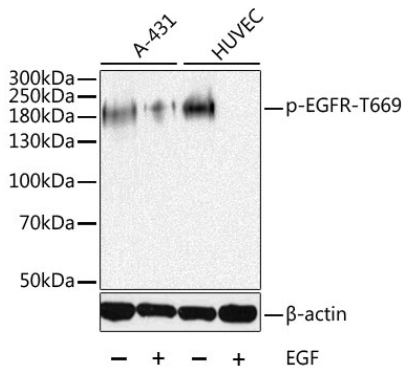
Affinity purification

### Storage

Store at -20°C. Avoid freeze / thaw cycles.

Buffer: PBS containing 50% glycerol, preserved with proclin300 or sodium azide (as specified on the Certificate of Analysis), pH 7.3.

## Validation Data



Western blot analysis of lysates from A-431 and HUVEC cells, using Phospho-EGFR-T669 Rabbit pAb (AP0025) at 1:1000 dilution. A431 cells were treated by EGF (100ng/mL) for 30 minutes after serum-starvation overnight. HUVEC cells were treated by EGF.

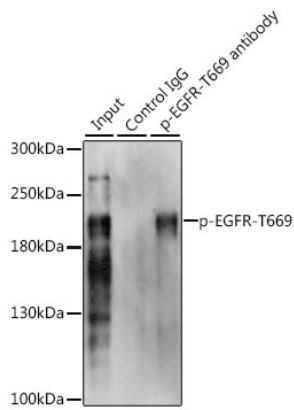
Secondary antibody: HRP-conjugated Goat anti-Rabbit IgG (H+L) (AS014) at 1:10000 dilution.

Lysates/proteins: 25 $\mu$ g per lane.

Blocking buffer: 3% BSA.

Detection: ECL Basic Kit (RM00020).

Exposure time: 10s.



Immunoprecipitation analysis of 200  $\mu$ g extracts of A-431 cells, using 3  $\mu$ g Phospho-EGFR-T669 pAb (AP0025). Western blot was performed from the immunoprecipitate using Phospho-EGFR-T669 pAb (AP0025) at a dilution of 1:1000. A-431 cells were treated by EGF (100 ng/mL) at 37°C for 30 minutes after serum-starvation overnight.