

AE128

Leader in Biomolecular Solutions for Life Science



# mCherry-Tag Rabbit mAb

Catalog No.: AE128

Recombinant

## Basic Information

### Observed MW

27kDa/55kDa

### Calculated MW

### Category

Tag & Loading Control

### Applications

WB,IF/ICC,ELISA

### Cross-Reactivity

Species independent

## Background

Protein tags are peptide sequences genetically grafted onto a recombinant protein. Often these tags are removable by chemical agents or by enzymatic means, such as proteolysis or intein splicing. Tags are attached to proteins for various purposes. Epitope tags are short peptide sequences which are chosen because high-affinity antibodies can be reliably produced in many different species. These are usually derived from viral genes, which explain their high immunoreactivity. Epitope tags include V5-tag, Myc-tag, HA-tag and NE-tag. These tags are particularly useful for western blotting, immunofluorescence and immunoprecipitation experiments, although they also find use in antibody purification.

## Recommended Dilutions

WB 1:500 - 1:1000

IF/ICC 1:50 - 1:200

ELISA Recommended starting concentration is 1 µg/mL. Please optimize the concentration based on your specific assay requirements.

## Immunogen Information

### Gene ID

### Swiss Prot

### Immunogen

Recombinant fusion protein containing a sequence corresponding to amino acids 1-236 of mCherry tag.

### Synonyms

mCherry; mCherry tag; mCherry-tag

## Contact

 [www.abclonal.com](http://www.abclonal.com)

## Product Information

### Source

Rabbit

### Isotype

IgG

### Purification

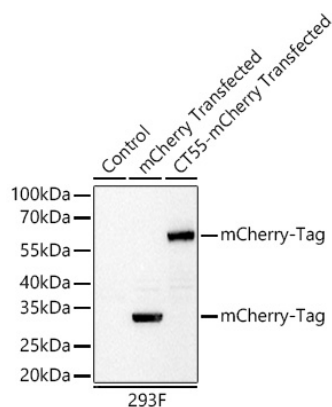
Affinity purification

### Storage

Store at -20°C. Avoid freeze / thaw cycles.

Buffer: PBS with 0.05% proclin300,0.05% BSA,50% glycerol,pH7.3.

## Validation Data



Western blot analysis of lysates from wild type (WT), 293F cells transfected with mCherry-Tag and 293F cells transfected with CT55-mCherry-Tag using mCherry-Tag Rabbit mAb (AE128) at 1:1000 dilution incubated overnight at 4°C. Secondary antibody: HRP-conjugated Goat anti-Rabbit IgG (H+L) (AS014) at 1:10000 dilution.

Lysates/proteins: 20 µg per lane.

Blocking buffer: 3% nonfat dry milk in TBST.

Detection: ECL Basic Kit (RM00020)

Exposure time: 1s.