

AE089

Leader in Biomolecular Solutions for Life Science



Rabbit anti V5-Tag mAb

Catalog No.: AE089

3 Publications

Basic Information

Observed MW

48 kDa, 27 kDa

Calculated MW

Category

Monoclonal Antibody

Applications

WB,IF/ICC,ChIP,ELISA

Cross-Reactivity

Species independent

CloneNo number

ARC50445

Background

Protein tags are peptide sequences genetically grafted onto a recombinant protein. Often these tags are removable by chemical agents or by enzymatic means, such as proteolysis or intein splicing. Tags are attached to proteins for various purposes. Epitope tags are short peptide sequences which are chosen because high-affinity antibodies can be reliably produced in many different species. These are usually derived from viral genes, which explain their high immunoreactivity. Epitope tags include V5-tag, Myc-tag, HA-tag and NE-tag. These tags are particularly useful for western blotting, immunofluorescence and immunoprecipitation experiments, although they also find use in antibody purification.

Recommended Dilutions

WB 1:2000 - 1:10000

IF/ICC 1:50 - 1:200

ELISA Recommended starting concentration is 1 µg/mL. Please optimize the concentration based on your specific assay requirements.

ChIP 5µg antibody for 10µg-15µg of Chromatin

Contact

 www.abclonal.com

Immunogen Information

Gene ID

Swiss Prot

Immunogen

Synthetic peptide. This information is considered to be commercially sensitive.

Synonyms

V5;V5 tag;V5-tag

Product Information

Source

Rabbit

Isotype

IgG

Purification

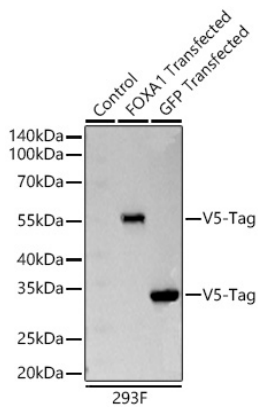
Affinity purification

Storage

Store at -20°C. Avoid freeze / thaw cycles.

Buffer: PBS containing 50% glycerol and 0.05% BSA, preserved with proclin300 or sodium azide (as specified on the Certificate of Analysis), pH 7.3.

Validation Data



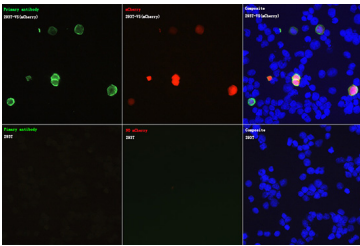
Western blot analysis of lysates from wild type (WT) 293F cells, 293F cells transfected with FOXA1-V5-Tag and 293F cells transfected with GFP-V5-Tag using Rabbit anti V5-Tag mAb (AE089) at 1:11000 dilution incubated at room temperature for 1.5 hours. Secondary antibody: HRP-conjugated Goat anti-Rabbit IgG (H+L) (AS014) at 1:10000 dilution.

Lysates/proteins: 20 µg per lane.

Blocking buffer: 3% nonfat dry milk in TBST.

Detection: ECL Basic Kit (RM00020)

.Exposure time: 10 s.



Immunofluorescence analysis of 293T cells transfected with V5(mCherry) protein and untreated 293T cells using Rabbit anti V5-Tag mAb (AE089) at dilution of 1:100 (40x lens). Secondary antibody: Cy3-conjugated Goat anti-Rabbit IgG (H+L) (AS007) at 1:500 dilution. Blue: DAPI for nuclear staining.