

AE025

Leader in Biomolecular Solutions for Life Science



# HRP-conjugated Mouse anti HA-Tag mAb

Catalog No.: AE025

6 Publications

## Basic Information

### Observed MW

53kDa(CD95)/65kDa(CD2)/53kDa(SCR  
N1)/26KD(HA(N  
端)/42kDa(WDR77)/45kDa(NR3C2)

### Calculated MW

### Category

Monoclonal Antibody

### Applications

WB,ELISA

### Cross-Reactivity

Species independent

### CloneNo number

AMC0557

### Conjugate

HRP

## Recommended Dilutions

**WB** 1:500 - 1:5000

**ELISA** Recommended starting  
concentration is 1  
µg/mL. Please optimize  
the concentration  
based on your specific  
assay requirements.

## Contact



[www.abclonal.com](http://www.abclonal.com)

## Background

Protein tags are peptide sequences genetically grafted onto a recombinant protein. Often these tags are removable by chemical agents or by enzymatic means, such as proteolysis or intein splicing. Tags are attached to proteins for various purposes. Epitope tags are short peptide sequences which are chosen because high-affinity antibodies can be reliably produced in many different species. These are usually derived from viral genes, which explain their high immunoreactivity. Epitope tags include V5-tag, Myc-tag, HA-tag and NE-tag. These tags are particularly useful for western blotting, immunofluorescence and immunoprecipitation experiments, although they also find use in antibody purification.

## Immunogen Information

### Gene ID

### Swiss Prot

### Immunogen

Synthetic peptide. This information is considered to be commercially sensitive.

### Synonyms

HA;HA tag;HA-tag

## Product Information

### Source

Mouse

### Isotype

IgG1,Kappa

### Purification

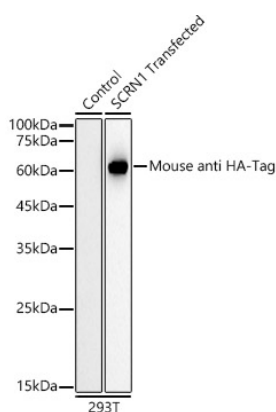
Affinity purification

### Storage

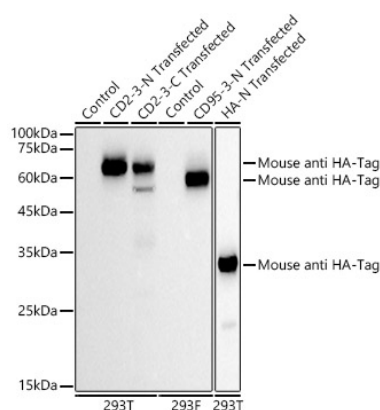
Store at -20°C. Avoid freeze / thaw cycles.

Buffer: PBS containing 50% glycerol, preserved with proclin300 or sodium azide (as specified on the Certificate of Analysis), pH 7.3.

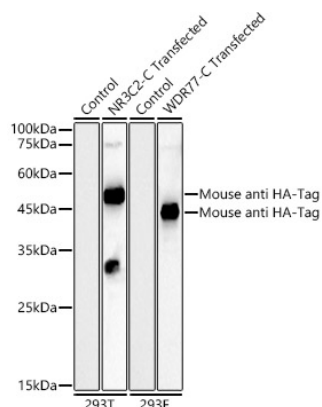
## Validation Data



Western blot analysis of extracts of normal 293T cells, 293T transfected with SCRNI1 Protein , using HRP-conjugated Mouse anti HA-Tag mAb (AE025) at 1:5000 dilution. Lysates/proteins: 25µg per lane. Blocking buffer: 3% nonfat dry milk in TBST. Detection: ECL Basic Kit (RM00020). Exposure time: 10s.



Western blot analysis of extracts of normal 293T and 293F cells, 293T transfected with CD2 Protein and HA-N Protein ,293F transfected with CD95-N Protein using HRP-conjugated Mouse anti HA-Tag mAb (AE025) at 1:5000 dilution. Lysates/proteins: 25µg per lane. Blocking buffer: 3% nonfat dry milk in TBST. Detection: ECL Basic Kit (RM00020). Exposure time: 3s.



Western blot analysis of extracts of normal 293T and 293F cells, 293T transfected with NR3C2-C Protein,293F transfected with WDR77-C Protein using HRP-conjugated Mouse anti HA-Tag mAb (AE025) at 1:5000 dilution. Lysates/proteins: 25µg per lane. Blocking buffer: 3% nonfat dry milk in TBST. Detection: ECL Basic Kit (RM00020). Exposure time: 90s.