

AC039

Leader in Biomolecular Solutions for Life Science



Alpha-tubulin (ubiquitous) chain Rabbit mAb

Catalog No.: AC039

Recombinant

2 Publications

Basic Information

Observed MW

52kDa

Calculated MW

50kDa

Category

SMab Recombinant Monoclonal
Antibody

Applications

WB,IHC-P,IF/ICC,ELISA

Cross-Reactivity

Human,Mouse,Rat

CloneNo number

ARC0226

Background

Enables double-stranded RNA binding activity and ubiquitin protein ligase binding activity. Predicted to be involved in microtubule cytoskeleton organization and mitotic cell cycle. Predicted to act upstream of or within cellular response to interleukin-4. Located in microtubule.

Recommended Dilutions

WB 1:500 - 1:2000

IHC-P 1:50 - 1:200

IF/ICC 1:50 - 1:200

ELISA Recommended starting concentration is 1 µg/mL. Please optimize the concentration based on your specific assay requirements.

Immunogen Information

Gene ID

10376

Swiss Prot

P68363

Immunogen

Recombinant fusion protein containing a sequence within amino acids 1-80 of human Alpha-tubulin (ubiquitous) chain (NP_006073.2).

Synonyms

K-ALPHA-1; Alpha-tubulin (ubiquitous) chain

Product Information

Source

Rabbit

Isotype

IgG

Purification

Affinity purification

Storage

Store at -20°C. Avoid freeze / thaw cycles.

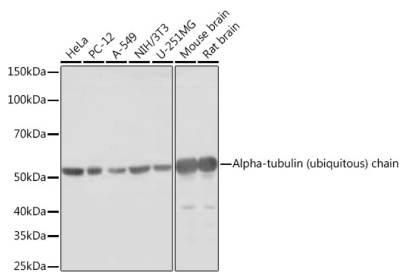
Buffer: PBS with 0.05% proclin300,0.05% BSA,50% glycerol,pH7.3.

Contact



www.abclonal.com

Validation Data



Western blot analysis of various lysates using Alpha-tubulin (ubiquitous) chain Rabbit mAb (AC039) at 1:1000 dilution.
Secondary antibody: HRP-conjugated Goat anti-Rabbit IgG (H+L) (AS014) at 1:10000 dilution.
Lysates/proteins: 25µg per lane.
Blocking buffer: 3% nonfat dry milk in TBST.
Detection: ECL Basic Kit (RM00020).
Exposure time: 1s.