

AC030

Leader in Biomolecular Solutions for Life Science



HRP-conjugated β -Tubulin Mouse mAb

Catalog No.: AC030

24 Publications

Basic Information

Observed MW

55kDa

Calculated MW

50kDa

Category

Monoclonal Antibody

Applications

WB,ELISA

Cross-Reactivity

Human,Mouse,Rat

CloneNo number

AMC0499

Conjugate

HRP

Recommended Dilutions

WB 1:5000 - 1:20000

ELISA Recommended starting concentration is 1 μ g/mL. Please optimize the concentration based on your specific assay requirements.

Contact



www.abclonal.com

Background

This gene encodes a beta tubulin protein. This protein forms a dimer with alpha tubulin and acts as a structural component of microtubules. Mutations in this gene cause cortical dysplasia, complex, with other brain malformations 6. Alternative splicing results in multiple splice variants. There are multiple pseudogenes for this gene on chromosomes 1, 6, 7, 8, 9, and 13.

Immunogen Information

Gene ID

203068

Swiss Prot

P07437

Immunogen

Recombinant protein (or fragment). This information is considered to be commercially sensitive.

Synonyms

M40; TUBB1; TUBB5; CDCBM6; CSCSC1; OK/SW-cl.56; HRP-conjugated β -Tubulin

Product Information

Source

Mouse

Isotype

IgG1,Kappa

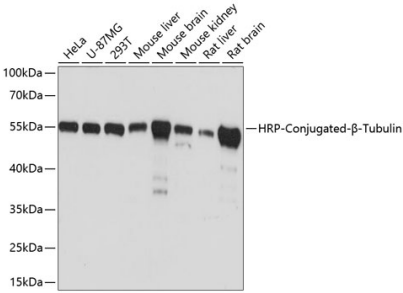
Purification

Affinity purification

Storage

Store at -20°C . Avoid freeze / thaw cycles.
Buffer: PBS with 50% glycerol, pH7.3.

Validation Data



Western blot analysis of various lysates using HRP-conjugated β -Tubulin Mouse mAb (AC030) at 1:10000 dilution.
Lysates/proteins: 25 μ g per lane.
Blocking buffer: 3% nonfat dry milk in TBST.
Detection: ECL Basic Kit (RM00020).
Exposure time: 1s.