

AC014

Leader in Biomolecular Solutions for Life Science



# $\alpha$ -Tubulin Rabbit pAb

Catalog No.: AC014

## Basic Information

### Observed MW

55kDa

### Calculated MW

50kDa

### Category

Polyclonal Antibody

### Applications

WB,IHC-P,IF/ICC

### Cross-Reactivity

Human,Mouse,Rat

## Background

Microtubules of the eukaryotic cytoskeleton perform essential and diverse functions and are composed of a heterodimer of alpha and beta tubulin. The genes encoding these microtubule constituents are part of the tubulin superfamily, which is composed of six distinct families. Genes from the alpha, beta and gamma tubulin families are found in all eukaryotes. The alpha and beta tubulins represent the major components of microtubules, while gamma tubulin plays a critical role in the nucleation of microtubule assembly. There are multiple alpha and beta tubulin genes and they are highly conserved among and between species. This gene encodes an alpha tubulin that is a highly conserved homolog of a rat testis-specific alpha tubulin. Alternatively spliced transcript variants encoding different isoforms have been found for this gene.

## Recommended Dilutions

WB 1:500 - 1:2000

IHC-P 1:25 - 1:50

IF/ICC 1:50 - 1:200

## Immunogen Information

### Gene ID

7277

### Swiss Prot

P68366

### Immunogen

Recombinant fusion protein containing a sequence corresponding to amino acids 1-180 of human  $\alpha$ -Tubulin (P68366).

### Synonyms

ALS22; TUBA1; H2-ALPHA;  $\alpha$ -Tubulin

## Contact

 [www.abclonal.com](http://www.abclonal.com)

## Product Information

### Source

Rabbit

### Isotype

IgG

### Purification

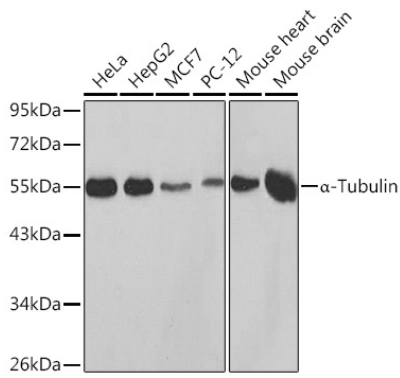
Affinity purification

### Storage

Store at -20°C. Avoid freeze / thaw cycles.

Buffer: PBS with 0.01% thimerosal, 50% glycerol, pH7.3.

## Validation Data



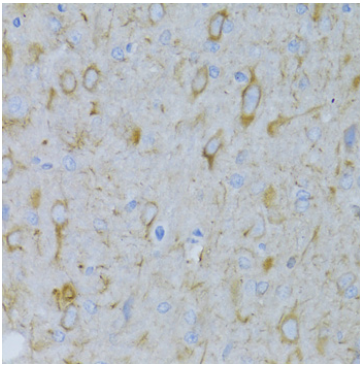
Western blot analysis of various lysates using  $\alpha$ -Tubulin Rabbit pAb (AC014) at 1:500 dilution.

Secondary antibody: HRP-conjugated Goat anti-Rabbit IgG (H+L) (AS014) at 1:10000 dilution.

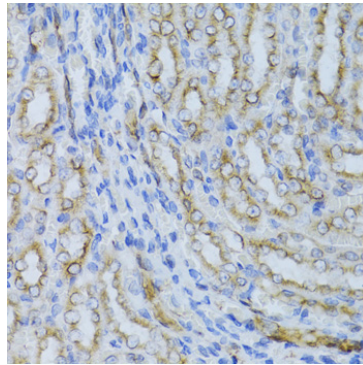
Lysates/proteins: 25 $\mu$ g per lane.

Blocking buffer: 3% nonfat dry milk in TBST.

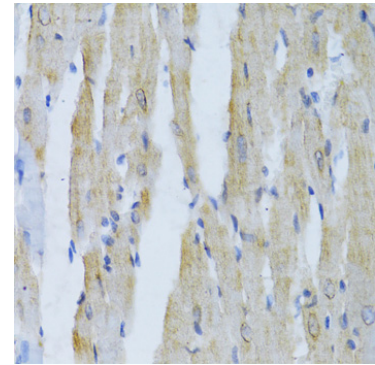
Detection: ECL Basic Kit (RM00020).



Immunohistochemistry analysis of paraffin-embedded Rat brain using  $\alpha$ -Tubulin Rabbit pAb (AC014) at dilution of 1:100 (40x lens). Microwave antigen retrieval performed with 0.01M PBS Buffer (pH 7.2) prior to IHC staining.



Immunohistochemistry analysis of paraffin-embedded Rat kidney using  $\alpha$ -Tubulin Rabbit pAb (AC014) at dilution of 1:100 (40x lens). Microwave antigen retrieval performed with 0.01M PBS Buffer (pH 7.2) prior to IHC staining.



Immunohistochemistry analysis of paraffin-embedded Rat heart using  $\alpha$ -Tubulin Rabbit pAb (AC014) at dilution of 1:100 (40x lens). Microwave antigen retrieval performed with 0.01M PBS Buffer (pH 7.2) prior to IHC staining.