

AC009

Leader in Biomolecular Solutions for Life Science



# Actin (plant specific) Mouse mAb

Catalog No.: AC009

96 Publications

## Basic Information

### Observed MW

45kDa

### Calculated MW

45kDa

### Category

Monoclonal Antibody

### Applications

WB,ELISA

### Cross-Reactivity

Various Plants

### CloneNo number

AMC0496

## Background

Actins are highly conserved proteins that are involved in cell motility, structure, and integrity. This actin is a major constituent of the contractile apparatus and one of the two nonmuscle cytoskeletal actins.

## Recommended Dilutions

**WB** 1:2000 - 1:5000

**ELISA** Recommended starting concentration is 1 µg/mL. Please optimize the concentration based on your specific assay requirements.

## Immunogen Information

**Gene ID**

**Swiss Prot**

### Immunogen

A synthetic peptide corresponding to Actin (plant specific).

### Synonyms

## Contact

 [www.abclonal.com](http://www.abclonal.com)

## Product Information

**Source**

Mouse

**Isotype**

IgG1

**Purification**

Affinity purification

### Storage

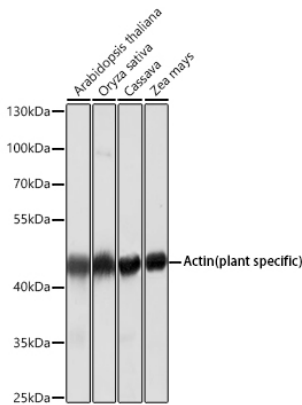
Store at -20°C. Avoid freeze / thaw cycles.

Buffer: PBS with 0.02% sodium azide,1% BSA,50% glycerol,pH7.3.

Validation Data



Western blot analysis of lysates from *Arabidopsis thaliana* tissue using Actin (plant specific) Mouse mAb (AC009).  
Secondary antibody: HRP-conjugated Goat anti-Mouse IgG (H+L) (AS003) at 1:10000 dilution.  
Lysates/proteins: 25µg per lane.  
Blocking buffer: 3% nonfat dry milk in TBST.



Western blot analysis of extracts of various tissues from *Arabidopsis thaliana*, using Actin (plant specific) Mouse mAb (AC009) at 1:5000 dilution.  
Secondary antibody: HRP-conjugated Goat anti-Mouse IgG (H+L) (AS003) at 1:10000 dilution.  
Lysates/proteins: 25µg per lane.  
Blocking buffer: 3% nonfat dry milk in TBST.  
Detection: ECL Basic Kit (RM00020).  
Exposure time: 30s.