

A9995

Leader in Biomolecular Solutions for Life Science



## FRMD6 Rabbit pAb

Catalog No.: A9995

### Basic Information

#### Observed MW

72kDa

#### Calculated MW

72kDa

#### Category

Polyclonal Antibody

#### Applications

WB,IHC-P,IF/ICC,ELISA

#### Cross-Reactivity

Human,Mouse,Rat

### Background

Predicted to be involved in actomyosin structure organization. Predicted to act upstream of or within apical constriction; cellular protein localization; and regulation of actin filament-based process. Predicted to be located in apical junction complex. Predicted to be active in cytoskeleton.

### Recommended Dilutions

**WB** 1:1000 - 1:4000

**IHC-P** 1:50 - 1:200

**IF/ICC** 1:50 - 1:200

**ELISA** Recommended starting concentration is 1 µg/mL. Please optimize the concentration based on your specific assay requirements.

### Immunogen Information

#### Gene ID

122786

#### Swiss Prot

Q96NE9

#### Immunogen

Synthetic peptide. This information is considered to be commercially sensitive.

#### Synonyms

EX1; Willin; C14orf31; c14\_5320; FRMD6

### Product Information

#### Source

Rabbit

#### Isotype

IgG

#### Purification

Affinity purification

#### Storage

Store at -20°C. Avoid freeze / thaw cycles.

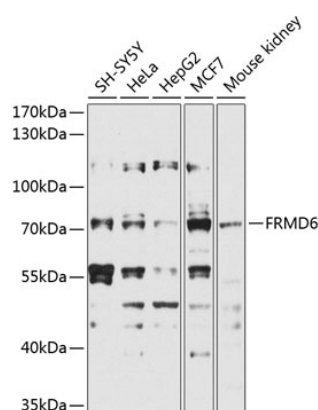
Buffer: PBS with 0.02% Sodium azide,50% glycerol,pH7.3.

### Contact

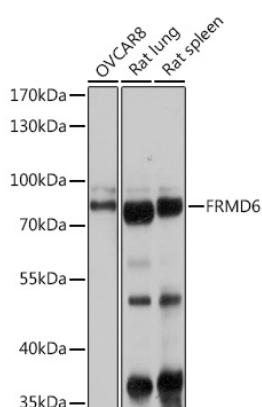


[www.abclonal.com](http://www.abclonal.com)

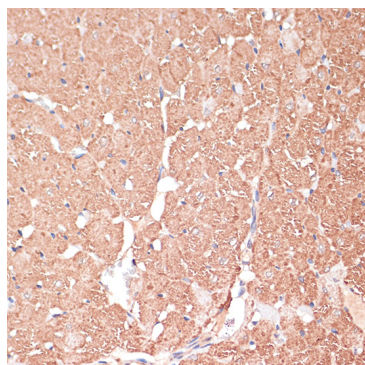
## Validation Data



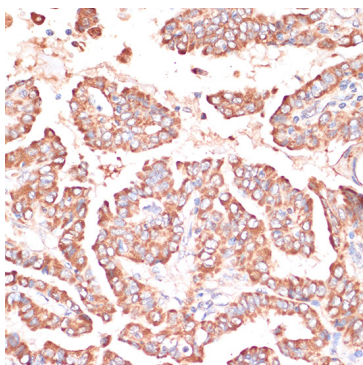
Western blot analysis of various lysates using FRMD6 Rabbit pAb (A9995) at 1:1000 dilution.  
 Secondary antibody: HRP-conjugated Goat anti-Rabbit IgG (H+L) (AS014) at 1:10000 dilution.  
 Lysates/proteins: 25µg per lane.  
 Blocking buffer: 3% nonfat dry milk in TBST.  
 Detection: ECL Basic Kit (RM00020).  
 Exposure time: 5s.



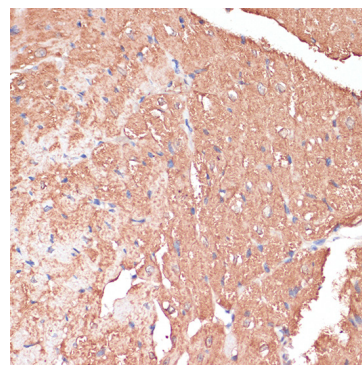
Western blot analysis of various lysates using FRMD6 Rabbit pAb (A9995) at 1:1000 dilution.  
 Secondary antibody: HRP-conjugated Goat anti-Rabbit IgG (H+L) (AS014) at 1:10000 dilution.  
 Lysates/proteins: 25µg per lane.  
 Blocking buffer: 3% nonfat dry milk in TBST.  
 Detection: ECL Basic Kit (RM00020).  
 Exposure time: 1s.



Immunohistochemistry analysis of paraffin-embedded Rat heart using FRMD6 Rabbit pAb (A9995) at dilution of 1:100 (40x lens).  
 Microwave antigen retrieval performed with 0.01M PBS Buffer (pH 7.2) prior to IHC staining.



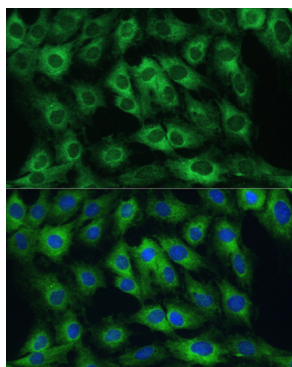
Immunohistochemistry analysis of paraffin-embedded Human thyroid cancer using FRMD6 Rabbit pAb (A9995) at dilution of 1:100 (40x lens).  
 Microwave antigen retrieval performed with 0.01M PBS Buffer (pH 7.2) prior to IHC staining.



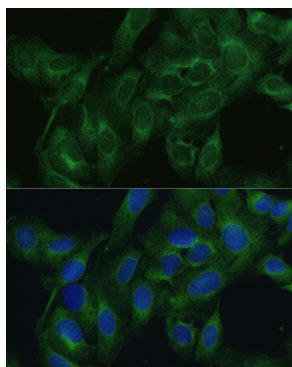
Immunohistochemistry analysis of paraffin-embedded Mouse heart using FRMD6 Rabbit pAb (A9995) at dilution of 1:100 (40x lens).  
 Microwave antigen retrieval performed with 0.01M PBS Buffer (pH 7.2) prior to IHC staining.

## Validation Data

---



Immunofluorescence analysis of C6 cells using FRMD6 Rabbit pAb (A9995) at dilution of 1:100. Blue: DAPI for nuclear staining.



Immunofluorescence analysis of U2OS cells using FRMD6 Rabbit pAb (A9995) at dilution of 1:100. Blue: DAPI for nuclear staining.