

A9989

Leader in Biomolecular Solutions for Life Science



KLHL13 Rabbit pAb

Catalog No.: A9989

Basic Information

Observed MW

60kDa

Calculated MW

74kDa

Category

Polyclonal Antibody

Applications

WB,ELISA

Cross-Reactivity

Human,Mouse

Background

This gene encodes a BTB and kelch domain containing protein and belongs to the kelch repeat domain containing superfamily of proteins. The encoded protein functions as an adaptor protein that complexes with Cullin 3 and other proteins to form the Cullin 3-based E3 ubiquitin-protein ligase complex. This complex is necessary for proper chromosome segregation and completion of cytokinesis. Alternate splicing results in multiple transcript variants.

Recommended Dilutions

WB 1:500 - 1:2000

ELISA Recommended starting concentration is 1 µg/mL. Please optimize the concentration based on your specific assay requirements.

Immunogen Information

Gene ID

90293

Swiss Prot

Q9P2N7

Immunogen

Recombinant protein (or fragment). This information is considered to be commercially sensitive.

Synonyms

BKLHD2; KLHL13

Contact



www.abclonal.com

Product Information

Source

Rabbit

Isotype

IgG

Purification

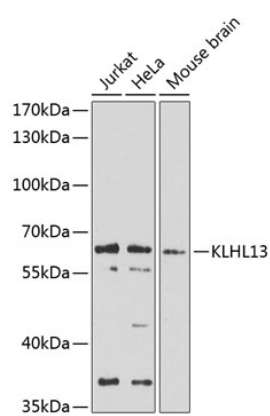
Affinity purification

Storage

Store at -20°C. Avoid freeze / thaw cycles.

Buffer: PBS with 0.02% sodium azide, 50% glycerol, pH7.3.

Validation Data



Western blot analysis of various lysates using KLHL13 Rabbit pAb (A9989) at 1:1000 dilution.
Secondary antibody: HRP-conjugated Goat anti-Rabbit IgG (H+L) (AS014) at 1:10000 dilution.
Lysates/proteins: 25µg per lane.
Blocking buffer: 3% nonfat dry milk in TBST.
Detection: ECL Basic Kit (RM00020).
Exposure time: 10s.