

A9901

Leader in Biomolecular Solutions for Life Science



ACLY Mouse mAb

Catalog No.: A9901

Basic Information

Observed MW

121kDa

Calculated MW

121kDa

Category

Monoclonal Antibody

Applications

WB,IF/ICC,FC,ELISA

Cross-Reactivity

Human,Mouse,Monkey

Background

ATP citrate lyase is the primary enzyme responsible for the synthesis of cytosolic acetyl-CoA in many tissues. The enzyme is a tetramer (relative molecular weight approximately 440,000) of apparently identical subunits. It catalyzes the formation of acetyl-CoA and oxaloacetate from citrate and CoA with a concomitant hydrolysis of ATP to ADP and phosphate. The product, acetyl-CoA, serves several important biosynthetic pathways, including lipogenesis and cholesterologenesis. In nervous tissue, ATP citrate-lyase may be involved in the biosynthesis of acetylcholine. Multiple transcript variants encoding distinct isoforms have been identified for this gene.

Recommended Dilutions

WB 1:500 - 1:2000

IF/ICC 1:50 - 1:200

FC 1:20 - 1:50

ELISA Recommended starting concentration is 1 µg/mL. Please optimize the concentration based on your specific assay requirements.

Immunogen Information

Gene ID

47

Swiss Prot

P53396

Immunogen

Recombinant protein (or fragment). This information is considered to be commercially sensitive.

Synonyms

ACL; ATPCL; CLATP; ACLY

Product Information

Source

Mouse

Isotype

IgG

Purification

Affinity purification

Storage

Store at -20°C. Avoid freeze / thaw cycles.

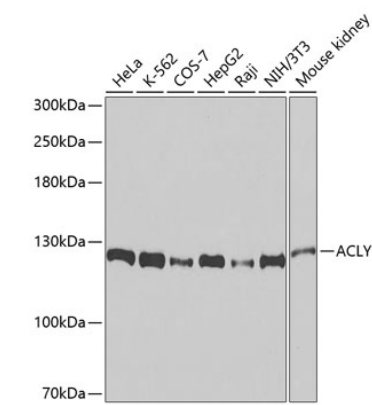
Buffer: PBS with 0.02% sodium azide, 50% glycerol, pH7.3.

Contact



www.abclonal.com

Validation Data



Western blot analysis of various lysates using ACLY Mouse mAb (A9901) at 1:1000 dilution.
Secondary antibody: HRP-conjugated Goat anti-Mouse IgG (H+L) (AS003) at 1:10000 dilution.
Lysates/proteins: 25µg per lane.
Blocking buffer: 3% nonfat dry milk in TBST.
Detection: ECL Basic Kit (RM00020).
Exposure time: 10s.