

A9891

Leader in Biomolecular Solutions for Life Science



## EME2 Rabbit pAb

Catalog No.: A9891

### Basic Information

**Observed MW**

41kDa

**Calculated MW**

41kDa

**Category**

Polyclonal Antibody

**Applications**

WB,ELISA

**Cross-Reactivity**

Human

### Background

EME2 forms a heterodimer with MUS81 (MIM 606591) that functions as an XPF (MIM 278760)-type flap/fork endonuclease in DNA repair (Ciccia et al., 2007 [PubMed 17289582]).

### Recommended Dilutions

**WB** 1:500 - 1:2000

**ELISA** Recommended starting concentration is 1 µg/mL. Please optimize the concentration based on your specific assay requirements.

### Immunogen Information

**Gene ID**

197342

**Swiss Prot**

A4GXA9

**Immunogen**

Recombinant protein (or fragment). This information is considered to be commercially sensitive.

**Synonyms**

SLX2B; gs125; EME2

### Contact



[www.abclonal.com](http://www.abclonal.com)

### Product Information

**Source**

Rabbit

**Isotype**

IgG

**Purification**

Affinity purification

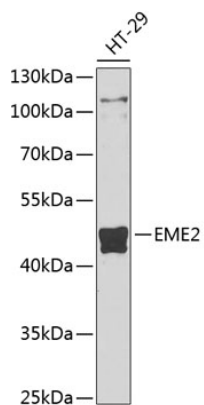
**Storage**

Store at -20°C. Avoid freeze / thaw cycles.

Buffer: PBS with 0.02% sodium azide, 50% glycerol, pH7.3.

## Validation Data

---



Western blot analysis of lysates from HT-29 cells, using EME2 Rabbit pAb (A9891) at 1:1000 dilution.

Secondary antibody: HRP-conjugated Goat anti-Rabbit IgG (H+L) (AS014) at 1:10000 dilution.

Lysates/proteins: 25µg per lane.

Blocking buffer: 3% nonfat dry milk in TBST.

Detection: ECL Basic Kit (RM00020).

Exposure time: 15s.