

A9878

Leader in Biomolecular Solutions for Life Science



PBRM1 Rabbit pAb

Catalog No.: A9878

1 Publications

Basic Information

Observed MW

230kDa

Calculated MW

193kDa

Category

Polyclonal Antibody

Applications

WB,IP,ELISA

Cross-Reactivity

Human,Mouse,Rat

Background

This locus encodes a subunit of ATP-dependent chromatin-remodeling complexes. The encoded protein has been identified as an integral component of complexes necessary for ligand-dependent transcriptional activation by nuclear hormone receptors. Mutations at this locus have been associated with primary clear cell renal cell carcinoma.

Recommended Dilutions

WB 1:500 - 1:2000

IP 0.5µg-4µg antibody for
200µg-400µg extracts
of whole cells

ELISA Recommended starting
concentration is 1
µg/mL. Please optimize
the concentration
based on your specific
assay requirements.

Immunogen Information

Gene ID

55193

Swiss Prot

Q86U86

Immunogen

Recombinant protein (or fragment). This information is considered to be commercially sensitive.

Synonyms

PB1; RCC; BAF180; SMARCH1; PBRM1

Product Information

Source

Rabbit

Isotype

IgG

Purification

Affinity purification

Storage

Store at -20°C. Avoid freeze / thaw cycles.

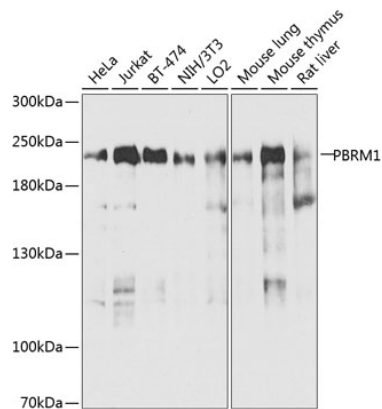
Buffer: PBS containing 50% glycerol, preserved with proclin300 or sodium azide (as specified on the Certificate of Analysis), pH 7.3.

Contact

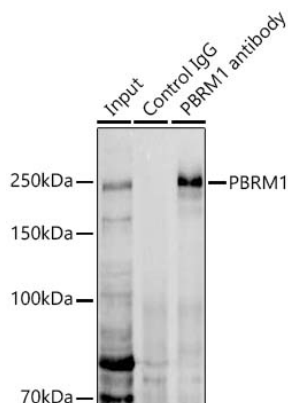


www.abclonal.com

Validation Data



Western blot analysis of various lysates using PBRM1 Rabbit pAb (A9878) at 1:1000 dilution. Secondary antibody: HRP-conjugated Goat anti-Rabbit IgG (H+L) (AS014) at 1:10000 dilution. Lysates/proteins: 25µg per lane. Blocking buffer: 3% nonfat dry milk in TBST. Detection: ECL Enhanced Kit (RM00021). Exposure time: 30s.



Immunoprecipitation analysis of 300 µg extracts of Jurkat cells using 3 µg PBRM1 Rabbit pAb (A9878). Western blot was performed from the immunoprecipitate using PBRM1 Rabbit pAb (A9878) at a dilution of 1:500.