

A9850

Leader in Biomolecular Solutions for Life Science



## FBP2 Rabbit pAb

Catalog No.: A9850

### Basic Information

#### Observed MW

36kDa

#### Calculated MW

37kDa

#### Category

Polyclonal Antibody

#### Applications

WB,IF/ICC,ELISA

#### Cross-Reactivity

Mouse,Rat

### Background

This gene encodes a gluconeogenesis regulatory enzyme which catalyzes the hydrolysis of fructose 1,6-bisphosphate to fructose 6-phosphate and inorganic phosphate.

### Recommended Dilutions

WB 1:500 - 1:2000

IF/ICC 1:50 - 1:200

### Immunogen Information

#### Gene ID

8789

#### Swiss Prot

O00757

#### Immunogen

Recombinant fusion protein containing a sequence corresponding to amino acids 1-339 of human FBP2 (NP\_003828.2).

#### Synonyms

CORLK; FBP2

### Contact



[www.abclonal.com](http://www.abclonal.com)

### Product Information

#### Source

Rabbit

#### Isotype

IgG

#### Purification

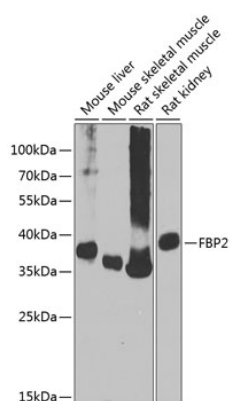
Affinity purification

#### Storage

Store at -20°C. Avoid freeze / thaw cycles.

Buffer: PBS with 0.02% sodium azide, 50% glycerol, pH7.3.

## Validation Data



Western blot analysis of extracts of various cell lines, using FBP2 antibody (A9850) at 1:1000 dilution.

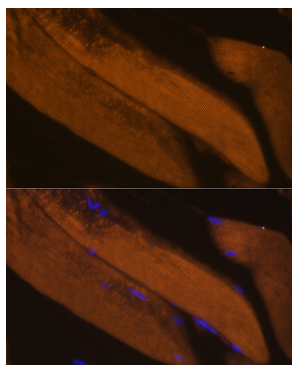
Secondary antibody: HRP Goat Anti-Rabbit IgG (H+L) (AS014) at 1:10000 dilution.

Lysates/proteins: 25µg per lane.

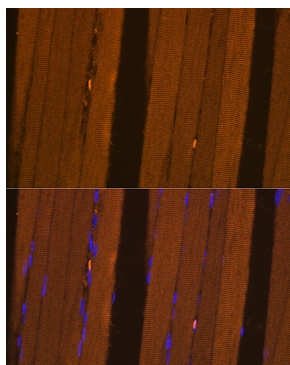
Blocking buffer: 3% nonfat dry milk in TBST.

Detection: ECL Basic Kit (RM00020).

Exposure time: 90s.



Immunofluorescence analysis of Mouse skeletal muscle using FBP2 antibody (A9850) at dilution of 1:100. Blue: DAPI for nuclear staining.



Immunofluorescence analysis of Rat skeletal muscle using FBP2 antibody (A9850) at dilution of 1:100. Blue: DAPI for nuclear staining.