

A9831

Leader in Biomolecular Solutions for Life Science



NDUFA6 Rabbit pAb

Catalog No.: A9831

Basic Information

Observed MW

13kDa

Calculated MW

15kDa

Category

Polyclonal Antibody

Applications

WB, ELISA

Cross-Reactivity

Human, Mouse, Rat

Background

This gene encodes a member of the LYR family of proteins that contain a highly conserved tripeptide (LYR) motif near the N-terminus. The encoded protein is an accessory subunit of NADH: ubiquinone oxidoreductase (Complex I), which is the largest enzyme of the mitochondrial membrane respiratory chain. Complex I functions in electron transfer from NADH to the respiratory chain.

Recommended Dilutions

WB 1:500 - 1:2000

ELISA Recommended starting concentration is 1 µg/mL. Please optimize the concentration based on your specific assay requirements.

Immunogen Information

Gene ID

4700

Swiss Prot

P56556

Immunogen

Recombinant fusion protein containing a sequence corresponding to amino acids 35-154 of human NDUFA6 (NP_002481.2).

Synonyms

B14; LYRM6; CI-B14; MC1DN33; NADHB14; NDUFA6

Contact



www.abclonal.com

Product Information

Source

Rabbit

Isotype

IgG

Purification

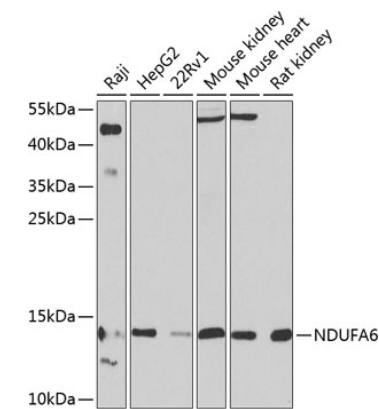
Affinity purification

Storage

Store at -20°C. Avoid freeze / thaw cycles.

Buffer: PBS with 0.02% sodium azide, 50% glycerol, pH 7.3.

Validation Data



Western blot analysis of various lysates using NDUFA6 Rabbit pAb (A9831) at 1:1000 dilution.
Secondary antibody: HRP-conjugated Goat anti-Rabbit IgG (H+L) (AS014) at 1:10000 dilution.
Lysates/proteins: 25µg per lane.
Blocking buffer: 3% nonfat dry milk in TBST.
Detection: ECL Basic Kit (RM00020).
Exposure time: 90s.