

A9762

Leader in Biomolecular Solutions for Life Science



MT-CYB Rabbit pAb

Catalog No.: A9762 **10 Publications**

Basic Information

Observed MW

43kDa

Calculated MW

43kDa

Category

Polyclonal Antibody

Applications

WB,ELISA

Cross-Reactivity

Human,Mouse,Rat

Background

Predicted to enable metal ion binding activity and ubiquinol-cytochrome-c reductase activity. Predicted to be involved in several processes, including electron transport coupled proton transport; mitochondrial electron transport, ubiquinol to cytochrome c; and response to glucagon. Located in membrane and mitochondrion. Is integral component of mitochondrial inner membrane. Human ortholog(s) of this gene implicated in ovarian carcinoma and urinary bladder cancer. Orthologous to human MT-CYB (mitochondrially encoded cytochrome b).

Recommended Dilutions

WB 1:500 - 1:1000

ELISA Recommended starting concentration is 1 µg/mL. Please optimize the concentration based on your specific assay requirements.

Immunogen Information

Gene ID

17711

Swiss Prot

P00158

Immunogen

Synthetic peptide. This information is considered to be commercially sensitive.

Synonyms

CYTB; MT-CYB

Contact

 www.abclonal.com

Product Information

Source

Rabbit

Isotype

IgG

Purification

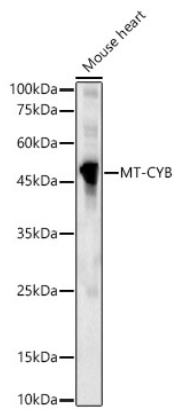
Affinity purification

Storage

Store at -20°C. Avoid freeze / thaw cycles.

Buffer: PBS containing 50% glycerol, preserved with proclin300 or sodium azide (as specified on the Certificate of Analysis),pH7.3.

Validation Data



Western blot analysis of lysates from Mouse heart, using MT-CYB Rabbit pAb (A9762) at 1:1000 dilution.

Secondary antibody: HRP-conjugated Goat anti-Rabbit IgG (H+L) (AS014) at 1:10000 dilution.

Lysates/proteins: 25µg per lane.

Blocking buffer: 3% nonfat dry milk in TBST.

Detection: ECL Basic Kit (RM00020).

Exposure time: 90s.