

A9725

Leader in Biomolecular Solutions for Life Science



## RAP1A + RAP1B Rabbit mAb

Catalog No.: A9725

Recombinant

### Basic Information

#### Observed MW

21kDa

#### Calculated MW

21kDa

#### Category

SMab Recombinant Monoclonal  
Antibody

#### Applications

WB,IF/ICC,ELISA

#### Cross-Reactivity

Human,Mouse,Rat

#### CloneNo number

ARC1719

### Background

This gene encodes a member of the RAS-like small GTP-binding protein superfamily. Members of this family regulate multiple cellular processes including cell adhesion and growth and differentiation. This protein localizes to cellular membranes and has been shown to regulate integrin-mediated cell signaling. This protein also plays a role in regulating outside-in signaling in platelets. Alternate splicing results in multiple transcript variants. Pseudogenes of this gene are found on chromosomes 3, 5, 6 and 9. [provided by RefSeq, Oct 2011]

### Recommended Dilutions

WB 1:500 - 1:2000

IF/ICC 1:50 - 1:200

### Immunogen Information

#### Gene ID

5908/5906

#### Swiss Prot

P61224/P62834

#### Immunogen

A synthetic peptide corresponding to a sequence within amino acids 70-150 of human RAP1A + RAP1B (P61224).

#### Synonyms

K-REV; RAL1B; RAP1A + RAP1B

### Contact



[www.abclonal.com](http://www.abclonal.com)

### Product Information

#### Source

Rabbit

#### Isotype

IgG

#### Purification

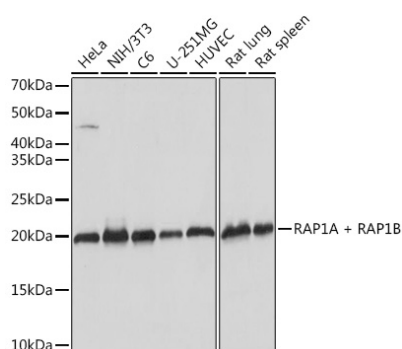
Affinity purification

#### Storage

Store at -20°C. Avoid freeze / thaw cycles.

Buffer: PBS with 0.02% sodium azide,0.05% BSA,50% glycerol,pH7.3.

## Validation Data



Western blot analysis of extracts of various cell lines, using RAP1A + RAP1B Rabbit mAb (A9725) at 1:1000 dilution.

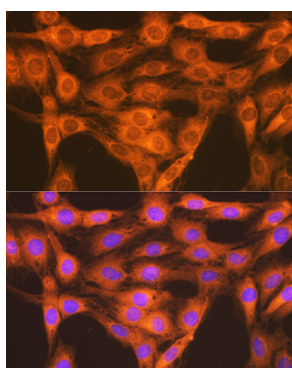
Secondary antibody: HRP Goat Anti-Rabbit IgG (H+L) (AS014) at 1:10000 dilution.

Lysates/proteins: 25µg per lane.

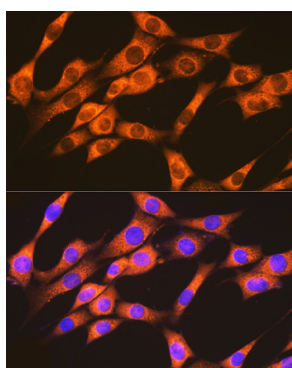
Blocking buffer: 3% nonfat dry milk in TBST.

Detection: ECL Basic Kit (RM00020).

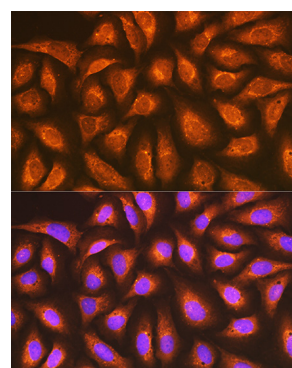
Exposure time: 1s.



Immunofluorescence analysis of C6 cells using RAP1A + RAP1B Rabbit mAb (A9725) at dilution of 1:100 (40x lens). Blue: DAPI for nuclear staining.



Immunofluorescence analysis of NIH-3T3 cells using RAP1A + RAP1B Rabbit mAb (A9725) at dilution of 1:100 (40x lens). Blue: DAPI for nuclear staining.



Immunofluorescence analysis of U-2 OS cells using RAP1A + RAP1B Rabbit mAb (A9725) at dilution of 1:100 (40x lens). Blue: DAPI for nuclear staining.