

A9617

Leader in Biomolecular Solutions for Life Science



## RRP7A Rabbit pAb

Catalog No.: A9617

### Basic Information

#### Observed MW

37kDa

#### Calculated MW

32kDa

#### Category

Polyclonal Antibody

#### Applications

WB,ELISA

#### Cross-Reactivity

Mouse,Rat

### Background

Enables RNA binding activity. Predicted to be involved in rRNA processing and ribosomal small subunit assembly. Predicted to act upstream of or within blastocyst formation. Predicted to be located in nucleoplasm. Predicted to be part of CURI complex and UTP-C complex. Implicated in primary autosomal recessive microcephaly.

### Recommended Dilutions

**WB** 1:500 - 1:2000

**ELISA** Recommended starting concentration is 1 µg/mL. Please optimize the concentration based on your specific assay requirements.

### Immunogen Information

#### Gene ID

27341

#### Swiss Prot

Q9Y3A4

#### Immunogen

Recombinant protein (or fragment). This information is considered to be commercially sensitive.

#### Synonyms

Rrp7; CGI-96; MCPH28; BK126B4.3; RRP7A

### Contact



[www.abclonal.com](http://www.abclonal.com)

### Product Information

#### Source

Rabbit

#### Isotype

IgG

#### Purification

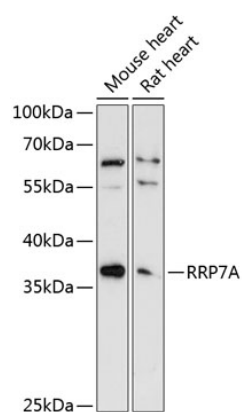
Affinity purification

#### Storage

Store at -20°C. Avoid freeze / thaw cycles.

Buffer: PBS with 0.01% thimerosal, 50% glycerol, pH7.3.

## Validation Data



Western blot analysis of various lysates using RRP7A Rabbit pAb (A9617) at 1:3000 dilution.

Secondary antibody: HRP-conjugated Goat anti-Rabbit IgG (H+L) (AS014) at 1:10000 dilution.

Lysates/proteins: 25µg per lane.

Blocking buffer: 3% nonfat dry milk in TBST.

Detection: ECL Basic Kit (RM00020).

Exposure time: 90s.