

A9416

Leader in Biomolecular Solutions for Life Science



Calumenin Rabbit mAb

Catalog No.: A9416

Recombinant

Basic Information

Observed MW

47kDa

Calculated MW

37kDa

Category

SMab Recombinant Monoclonal
Antibody

Applications

WB,IHC-P,ELISA

Cross-Reactivity

Human,Mouse,Rat

CloneNo number

ARC2715

Background

The product of this gene is a calcium-binding protein localized in the endoplasmic reticulum (ER) and it is involved in such ER functions as protein folding and sorting. This protein belongs to a family of multiple EF-hand proteins (CERC) that include reticulocalbin, ERC-55, and Cab45 and the product of this gene. Alternatively spliced transcript variants encoding different isoforms have been identified.

Recommended Dilutions

WB 1:500 - 1:1000

IHC-P 1:20 - 1:100

ELISA Recommended starting concentration is 1 µg/mL. Please optimize the concentration based on your specific assay requirements.

Immunogen Information

Gene ID
813

Swiss Prot
O43852

Immunogen

Synthetic peptide. This information is considered to be commercially sensitive.

Synonyms

CALU; calumenin; Calumenin

Contact

 www.abclonal.com

Product Information

Source
Rabbit

Isotype
IgG

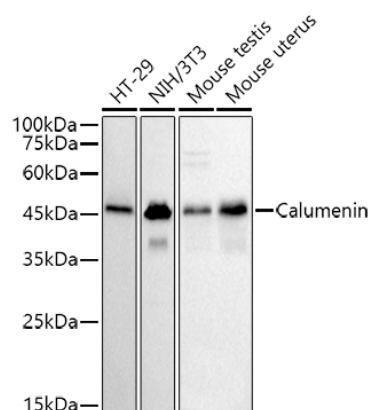
Purification
Affinity purification

Storage

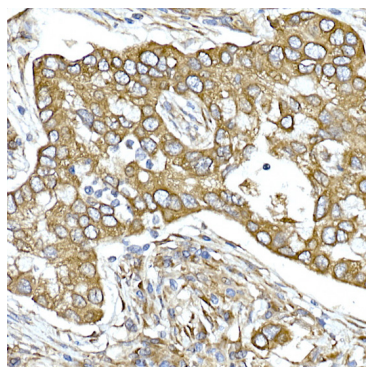
Store at -20°C. Avoid freeze / thaw cycles.

Buffer: PBS with 0.02% sodium azide,0.05% BSA,50% glycerol,pH7.3.

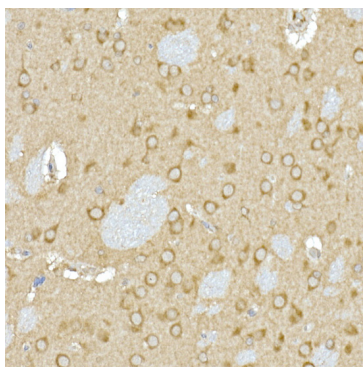
Validation Data



Western blot analysis of various lysates, using (A9416) at 1:500 dilution.
Secondary antibody: HRP-conjugated Goat anti-Rabbit IgG (H+L) (AS014) at 1:10000 dilution.
Lysates/proteins: 25µg per lane.
Blocking buffer: 3% nonfat dry milk in TBST.
Detection: ECL Basic Kit (RM00020).
Exposure time: 30s.



Immunohistochemistry analysis of paraffin-embedded Human lung cancer using Calumenin Rabbit mAb (A9416) at dilution of 1:20 (40x lens). High pressure antigen retrieval performed with 0.01M Citrate buffer (pH 6.0) prior to IHC staining.



Immunohistochemistry analysis of paraffin-embedded Rat brain using Calumenin Rabbit mAb (A9416) at dilution of 1:20 (40x lens). High pressure antigen retrieval performed with 0.01M Citrate buffer (pH 6.0) prior to IHC staining.