

A9392

Leader in Biomolecular Solutions for Life Science



PYGM Rabbit pAb

Catalog No.: A9392 **2 Publications**

Basic Information

Observed MW

100kDa

Calculated MW

97kDa

Category

Polyclonal Antibody

Applications

WB,ELISA

Cross-Reactivity

Human,Mouse,Rat

Background

This gene encodes a muscle enzyme involved in glycogenolysis. Highly similar enzymes encoded by different genes are found in liver and brain. Mutations in this gene are associated with McArdle disease (myophosphorylase deficiency), a glycogen storage disease of muscle. Alternative splicing results in multiple transcript variants.

Recommended Dilutions

WB 1:500 - 1:2000

ELISA Recommended starting concentration is 1 µg/mL. Please optimize the concentration based on your specific assay requirements.

Immunogen Information

Gene ID

5837

Swiss Prot

P11217

Immunogen

Recombinant fusion protein containing a sequence corresponding to amino acids 743-842 of human PYGM (NP_005600.1).

Synonyms

GSD5; PYGM

Contact

 www.abclonal.com

Product Information

Source

Rabbit

Isotype

IgG

Purification

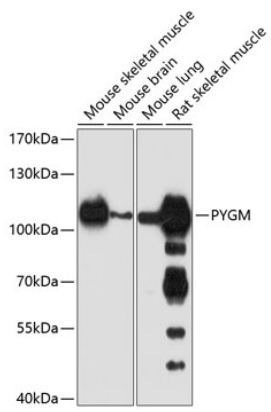
Affinity purification

Storage

Store at -20°C. Avoid freeze / thaw cycles.

Buffer: PBS with 0.02% Sodium azide,50% glycerol,pH7.3.

Validation Data



Western blot analysis of various lysates using PYGM Rabbit pAb (A9392) at 1:1000 dilution.

Secondary antibody: HRP-conjugated Goat anti-Rabbit IgG (H+L) (AS014) at 1:10000 dilution.

Lysates/proteins: 25 μ g per lane.

Blocking buffer: 3% nonfat dry milk in TBST.

Detection: ECL Basic Kit (RM00020).

Exposure time: 90s.