

A9380

Leader in Biomolecular Solutions for Life Science



Spermine synthase Rabbit mAb

Catalog No.: A9380

Recombinant

1 Publications

Basic Information

Observed MW

42kDa

Calculated MW

41kDa

Category

SMab Recombinant Monoclonal
Antibody

Applications

WB,ELISA

Cross-Reactivity

Human,Mouse,Rat

CloneNo number

ARC2747

Background

This gene encodes a protein belonging to the spermidine/spermin synthase family and catalyzes the production of spermine from spermidine. Pseudogenes of this gene are located on chromosomes 1, 5, 6 and X. Mutations in this gene cause an X-linked intellectual disability called Snyder-Robinson Syndrome (SRS). Multiple transcript variants encoding different isoforms have been found for this gene.

Recommended Dilutions

WB 1:500 - 1:1000

Immunogen Information

Gene ID

6611

Swiss Prot

P52788

Immunogen

A synthetic peptide corresponding to a sequence within amino acids 50-150 of human Spermine synthase (P52788).

Synonyms

SRS; SpS; MRSR; SPMSY; MRXSSR; Spermine synthase

Contact



www.abclonal.com

Product Information

Source

Rabbit

Isotype

IgG

Purification

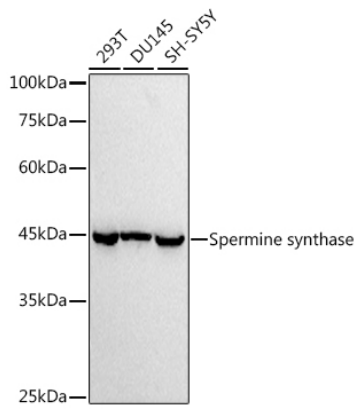
Affinity purification

Storage

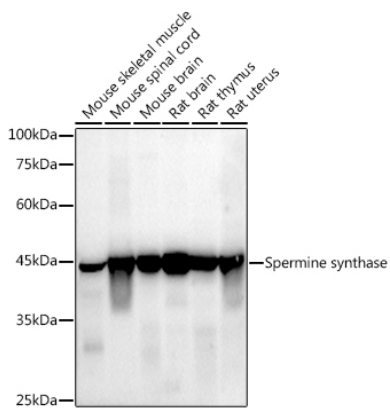
Store at -20°C. Avoid freeze / thaw cycles.

Buffer: PBS with 0.02% sodium azide,0.05% BSA,50% glycerol,pH7.3.

Validation Data



Western blot analysis of extracts of various cell lines, using (A9380) at 1:1000 dilution.
Secondary antibody: HRP Goat Anti-Rabbit IgG (H+L) (AS014) at 1:10000 dilution.
Lysates/proteins: 25µg per lane.
Blocking buffer: 3% nonfat dry milk in TBST.
Detection: ECL Basic Kit (RM00020).
Exposure time: 10s.



Western blot analysis of extracts of various cell lines, using (A9380) at 1:1000 dilution.
Secondary antibody: HRP Goat Anti-Rabbit IgG (H+L) (AS014) at 1:10000 dilution.
Lysates/proteins: 25µg per lane.
Blocking buffer: 3% nonfat dry milk in TBST.
Detection: ECL Enhanced Kit (RM00021).
Exposure time: 30s.