

A9348

Leader in Biomolecular Solutions for Life Science



# CLPTM1 Rabbit mAb

Catalog No.: A9348

Recombinant

## Basic Information

### Observed MW

100kDa

### Calculated MW

76kDa

### Category

SMab Recombinant Monoclonal  
Antibody

### Applications

WB,ELISA

### Cross-Reactivity

Human

### CloneNo number

ARC2720

## Recommended Dilutions

**WB** 1:100 - 1:500

**ELISA** Recommended starting concentration is 1 µg/mL. Please optimize the concentration based on your specific assay requirements.

## Contact

 [www.abclonal.com](http://www.abclonal.com)

## Background

Predicted to be involved in regulation of T cell differentiation in thymus. Located in membrane.

## Immunogen Information

### Gene ID

1209

### Swiss Prot

O96005

### Immunogen

Synthetic peptide. This information is considered to be commercially sensitive.

### Synonyms

CLPTM1; transmembrane protein

## Product Information

### Source

Rabbit

### Isotype

IgG

### Purification

Affinity purification

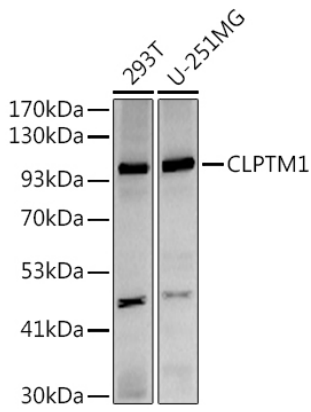
### Storage

Store at -20°C. Avoid freeze / thaw cycles.

Buffer: PBS containing 50% glycerol and 0.05% BSA, preserved with proclin300 or sodium azide (as specified on the Certificate of Analysis), pH 7.3.

## Validation Data

---



Western blot analysis of various lysates using (A9348) at 1:500 dilution.

Secondary antibody: HRP-conjugated Goat anti-Rabbit IgG (H+L) (AS014) at 1:10000 dilution.

Lysates/proteins: 25µg per lane.

Blocking buffer: 3% nonfat dry milk in TBST.

Detection: ECL Basic Kit (RM00020).

Exposure time: 180s.