

A9286

Leader in Biomolecular Solutions for Life Science



EHBP1 Rabbit pAb

Catalog No.: A9286

Basic Information

Observed MW

180kDa

Calculated MW

140kDa

Category

Polyclonal Antibody

Applications

WB,ELISA

Cross-Reactivity

Human,Mouse,Rat

Background

This gene encodes an Eps15 homology domain binding protein. The encoded protein may play a role in endocytic trafficking. A single nucleotide polymorphism in this gene is associated with an aggressive form of prostate cancer. Alternate splicing results in multiple transcript variants.

Recommended Dilutions

WB 1:500 - 1:2000

ELISA Recommended starting concentration is 1 µg/mL. Please optimize the concentration based on your specific assay requirements.

Immunogen Information

Gene ID

23301

Swiss Prot

Q8NDI1

Immunogen

Recombinant fusion protein containing a sequence corresponding to amino acids 1-100 of human EHBP1 (NP_056067.2).

Synonyms

HPC12; NACSIN; EHBP1

Contact



www.abclonal.com

Product Information

Source

Rabbit

Isotype

IgG

Purification

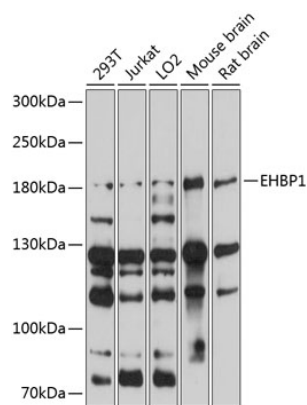
Affinity purification

Storage

Store at -20°C. Avoid freeze / thaw cycles.

Buffer: PBS with 0.02% sodium azide,50% glycerol,pH7.3.

Validation Data



Western blot analysis of various lysates using EHBP1 Rabbit pAb (A9286) at 1:1000 dilution.
Secondary antibody: HRP-conjugated Goat anti-Rabbit IgG (H+L) (AS014) at 1:10000 dilution.
Lysates/proteins: 25µg per lane.
Blocking buffer: 3% nonfat dry milk in TBST.
Detection: ECL Enhanced Kit (RM00021).
Exposure time: 60s.