

A9284

Leader in Biomolecular Solutions for Life Science



## RPL26 Rabbit pAb

Catalog No.: A9284

### Basic Information

**Observed MW**

20kDa

**Calculated MW**

17kDa

**Category**

Polyclonal Antibody

**Applications**

WB

**Cross-Reactivity**

Human

### Background

Ribosomes, the organelles that catalyze protein synthesis, consist of a small 40S subunit and a large 60S subunit. Together these subunits are composed of 4 RNA species and approximately 80 structurally distinct proteins. This gene encodes a ribosomal protein that is a component of the 60S subunit. The protein belongs to the L24P family of ribosomal proteins. It is located in the cytoplasm. As is typical for genes encoding ribosomal proteins, there are multiple processed pseudogenes of this gene dispersed through the genome. Mutations in this gene result in Diamond-Blackfan anemia. Alternative splicing results in multiple transcript variants.

### Recommended Dilutions

WB 1:500 - 1:1000

### Immunogen Information

**Gene ID**

6154

**Swiss Prot**

P61254

**Immunogen**

Synthetic peptide. This information is considered to be commercially sensitive.

**Synonyms**

L26; uL24; DBA11; RPL26

### Contact



[www.abclonal.com](http://www.abclonal.com)

### Product Information

**Source**

Rabbit

**Isotype**

IgG

**Purification**

Affinity purification

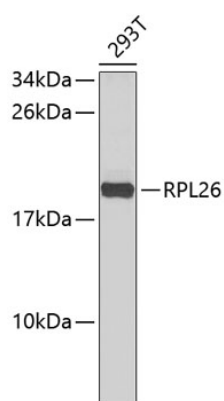
**Storage**

Store at 4°C. Avoid freeze / thaw cycles.

Buffer: PBS with 0.02% sodium azide, pH7.3.

## Validation Data

---



Western blot analysis of lysates from 293T cells, using RPL26 Rabbit pAb (A9284).  
Secondary antibody: HRP-conjugated Goat anti-Rabbit IgG (H+L) (AS014) at 1:10000 dilution.  
Lysates/proteins: 25µg per lane.  
Blocking buffer: 3% nonfat dry milk in TBST.