

A9283

Leader in Biomolecular Solutions for Life Science



# KLF17 Rabbit pAb

Catalog No.: A9283

## Basic Information

---

### Observed MW

53kDa

### Calculated MW

43kDa

### Category

Polyclonal Antibody

### Applications

WB,FC

### Cross-Reactivity

Human

## Background

---

Enables sequence-specific double-stranded DNA binding activity. Predicted to be involved in negative regulation of transcription by RNA polymerase II. Predicted to act upstream of or within gamete generation. Predicted to be located in nucleus. Predicted to be part of chromatin.

## Recommended Dilutions

---

WB	1:500 - 1:1000
FC	1:20 - 1:50

## Immunogen Information

---

### Gene ID

128209

### Swiss Prot

Q5JT82

### Immunogen

A synthetic Peptide of human KLF17

### Synonyms

ZLF393; ZNF393; Zfp393; KLF17

## Contact

---

 [www.abclonal.com](http://www.abclonal.com)

## Product Information

---

### Source

Rabbit

### Isotype

IgG

### Purification

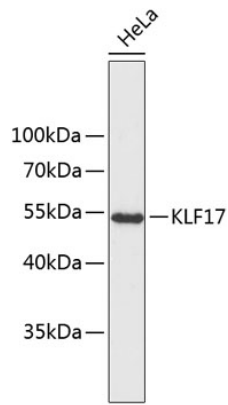
Affinity purification

### Storage

Store at 4°C. Avoid freeze / thaw cycles.  
Buffer: PBS with 0.02% sodium azide,pH7.3.

## Validation Data

---



Western blot analysis of extracts of HeLa cells, using KLF17 antibody (A9283).  
Secondary antibody: HRP Goat Anti-Rabbit IgG (H+L) (AS014) at 1:10000 dilution.  
Lysates/proteins: 25µg per lane.  
Blocking buffer: 3% nonfat dry milk in TBST.