

A9243

Leader in Biomolecular Solutions for Life Science



LUC7L Rabbit pAb

Catalog No.: A9243

Basic Information

Observed MW

43kDa

Calculated MW

44kDa

Category

Polyclonal Antibody

Applications

WB,FC

Cross-Reactivity

Human

Background

The LUC7L gene may represent a mammalian heterochromatic gene, encoding a putative RNA-binding protein similar to the yeast Luc7p subunit of the U1 snRNP splicing complex that is normally required for 5-prime splice site selection (Tufarelli et al., 2001 [PubMed 11170747]).

Recommended Dilutions

WB 1:500 - 1:1000

FC 1:20 - 1:50

Immunogen Information

Gene ID

55692

Swiss Prot

Q9NQ29

Immunogen

Synthetic peptide. This information is considered to be commercially sensitive.

Synonyms

Luc7; SR+89; LUC7B1; hLuc7B1; LUC7L

Contact



www.abclonal.com

Product Information

Source

Rabbit

Isotype

IgG

Purification

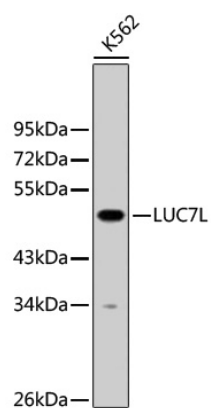
Affinity purification

Storage

Store at 4°C. Avoid freeze / thaw cycles.

Buffer: PBS with 0.02% sodium azide,pH7.3.

Validation Data



Western blot analysis of lysates from K562 cells, using LUC7L Rabbit pAb (A9243) at 1:1000 dilution.

Secondary antibody: HRP-conjugated Goat anti-Rabbit IgG (H+L) (AS014) at 1:10000 dilution.

Lysates/proteins: 25µg per lane.

Blocking buffer: 3% nonfat dry milk in TBST.