

A9209

Leader in Biomolecular Solutions for Life Science



## PSPC1 Rabbit pAb

Catalog No.: A9209

2 Publications

### Basic Information

#### Observed MW

65kDa

#### Calculated MW

59kDa

#### Category

Polyclonal Antibody

#### Applications

WB,IHC-P,IP,ELISA

#### Cross-Reactivity

Human,Mouse,Rat

### Background

This gene encodes a nucleolar protein that localizes to punctate subnuclear structures that occur close to splicing speckles, known as paraspeckles. These paraspeckles are composed of RNA-protein structures that include a non-coding RNA, NEAT1/Men epsilon/beta, and the Drosophila Behavior Human Splicing family of proteins, which include the product of this gene and the P54NRB/NONO and PSF/SFPQ proteins. Paraspeckles may function in the control of gene expression via an RNA nuclear retention mechanism. The protein encoded by this gene is found in paraspeckles in transcriptionally active cells, but it localizes to unique cap structures at the nucleolar periphery when RNA polymerase II transcription is inhibited, or during telophase. Alternative splicing of this gene results in multiple transcript variants. A related pseudogene, which is also located on chromosome 13, has been identified.

### Recommended Dilutions

**WB** 1:500 - 1:2000

**IHC-P** 1:50 - 1:200

**IP** 0.5µg-4µg antibody for  
200µg-400µg extracts  
of whole cells

**ELISA** Recommended starting  
concentration is 1  
µg/mL. Please optimize  
the concentration  
based on your specific  
assay requirements.

### Immunogen Information

#### Gene ID

55269

#### Swiss Prot

Q8WXF1

#### Immunogen

Recombinant fusion protein containing a sequence corresponding to amino acids 1-70 of human PSPC1 (NP\_001035879.1).

#### Synonyms

PSP1; PSPC1

### Product Information

#### Source

Rabbit

#### Isotype

IgG

#### Purification

Affinity purification

#### Storage

Store at -20°C. Avoid freeze / thaw cycles.

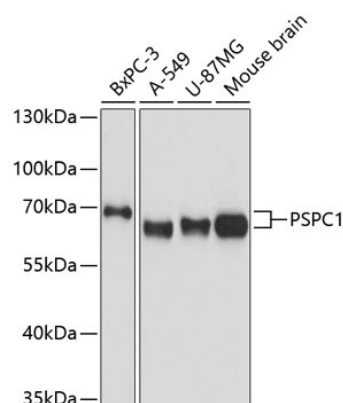
Buffer: PBS with 0.05% proclin300,50% glycerol,pH7.3.

### Contact

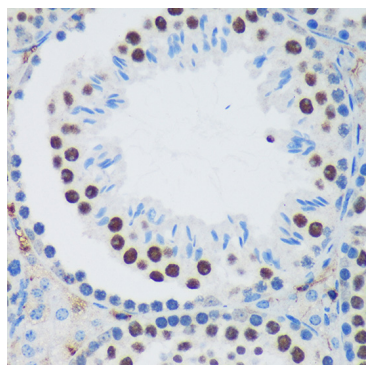


[www.abclonal.com](http://www.abclonal.com)

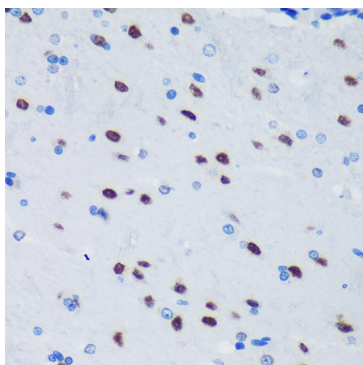
## Validation Data



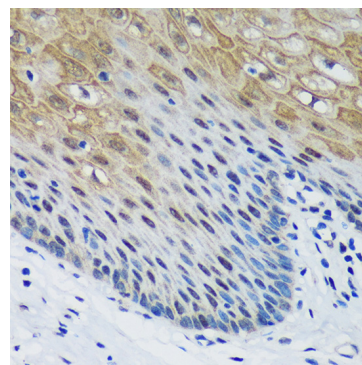
Western blot analysis of various lysates using PSPC1 Rabbit pAb (A9209) at 1:3000 dilution.  
 Secondary antibody: HRP-conjugated Goat anti-Rabbit IgG (H+L) (AS014) at 1:10000 dilution.  
 Lysates/proteins: 25µg per lane.  
 Blocking buffer: 3% nonfat dry milk in TBST.  
 Detection: ECL Basic Kit (RM00020).  
 Exposure time: 10s.



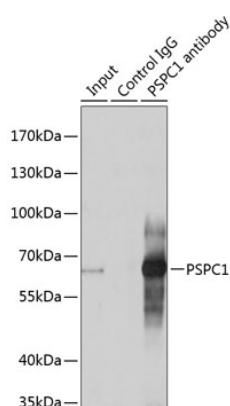
Immunohistochemistry analysis of paraffin-embedded Mouse testis using PSPC1 Rabbit pAb (A9209) at dilution of 1:100 (40x lens).  
 Microwave antigen retrieval performed with 0.01M PBS Buffer (pH 7.2) prior to IHC staining.



Immunohistochemistry analysis of paraffin-embedded Rat brain using PSPC1 Rabbit pAb (A9209) at dilution of 1:100 (40x lens).  
 Microwave antigen retrieval performed with 0.01M PBS Buffer (pH 7.2) prior to IHC staining.



Immunohistochemistry analysis of paraffin-embedded Human esophageal using PSPC1 Rabbit pAb (A9209) at dilution of 1:100 (40x lens).  
 Microwave antigen retrieval performed with 0.01M PBS Buffer (pH 7.2) prior to IHC staining.



Immunoprecipitation analysis of 200 µg extracts of A-549 cells using 3 µg PSPC1 antibody (A9209). Western blot was performed from the immunoprecipitate using PSPC1 antibody (A9209) at a dilution of 1:1000.