

A9143

Leader in Biomolecular Solutions for Life Science



eIF3B Rabbit mAb

Catalog No.: A9143

Recombinant

1 Publications

Basic Information

Observed MW

116kDa

Calculated MW

93kDa

Category

SMab Recombinant Monoclonal Antibody

Applications

WB,IF/ICC,ELISA

Cross-Reactivity

Human,Mouse,Rat

CloneNo number

ARC1448

Recommended Dilutions

WB 1:500 - 1:1000

IF/ICC 1:50 - 1:200

ELISA Recommended starting concentration is 1 µg/mL. Please optimize the concentration based on your specific assay requirements.

Contact

 www.abclonal.com

Background

Enables RNA binding activity. Contributes to translation initiation factor activity. Involved in several processes, including IRES-dependent viral translational initiation; translational initiation; and viral translational termination-reinitiation. Located in extracellular exosome. Part of eukaryotic translation initiation factor 3 complex.

Immunogen Information

Gene ID

8662

Swiss Prot

P55884

Immunogen

Recombinant protein (or fragment). This information is considered to be commercially sensitive.

Synonyms

PRT1; EIF3S9; EIF3-ETA; EIF3-P110; EIF3-P116; eIF3B

Product Information

Source

Rabbit

Isotype

IgG

Purification

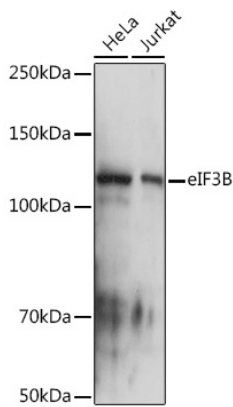
Affinity purification

Storage

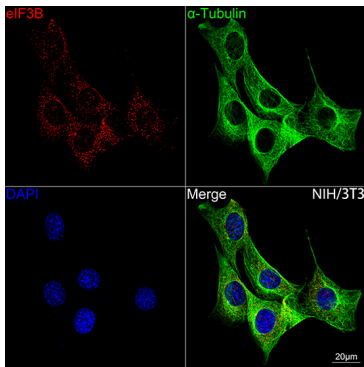
Store at -20°C. Avoid freeze / thaw cycles.

Buffer: PBS containing 50% glycerol and 0.05% BSA, preserved with proclin300 or sodium azide (as specified on the Certificate of Analysis), pH 7.3.

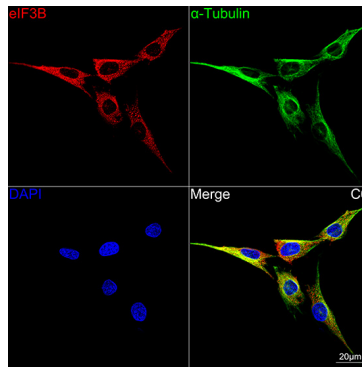
Validation Data



Western blot analysis of various lysates using eIF3B Rabbit mAb (A9143) at 1:1000 dilution.
Secondary antibody: HRP-conjugated Goat anti-Rabbit IgG (H+L) (AS014) at 1:10000 dilution.
Lysates/proteins: 25µg per lane.
Blocking buffer: 3% nonfat dry milk in TBST.
Detection: ECL Basic Kit (RM00020).
Exposure time: 1s.



Confocal imaging of NIH/3T3 cells using eIF3B Rabbit mAb (A9143, dilution 1:100) followed by a further incubation with Cy3-conjugated Goat Anti-Rabbit IgG (H+L) (AS007, dilution 1:500) (Red). The cells were counterstained with α-Tubulin Mouse mAb (AC012, dilution 1:400) followed by incubation with ABflo® 488-conjugated Goat Anti-Mouse IgG (H+L) (AS076, dilution 1:500) (Green). DAPI was used for nuclear staining (Blue). Objective: 100x.



Confocal imaging of C6 cells using eIF3B Rabbit mAb (A9143, dilution 1:100) followed by a further incubation with Cy3-conjugated Goat Anti-Rabbit IgG (H+L) (AS007, dilution 1:500) (Red). The cells were counterstained with α-Tubulin Mouse mAb (AC012, dilution 1:400) followed by incubation with ABflo® 488-conjugated Goat Anti-Mouse IgG (H+L) (AS076, dilution 1:500) (Green). DAPI was used for nuclear staining (Blue). Objective: 100x.