

A9101

Leader in Biomolecular Solutions for Life Science



EPB41L2 Rabbit pAb

Catalog No.: A9101

Basic Information

Observed MW

180kDa

Calculated MW

113kDa

Category

Polyclonal Antibody

Applications

WB,IF/ICC,ELISA

Cross-Reactivity

Human

Background

Predicted to enable PH domain binding activity; cytoskeletal protein binding activity; and structural molecule activity. Involved in positive regulation of protein localization to cell cortex. Located in cell junction; nucleoplasm; and plasma membrane. Colocalizes with COP9 signalosome.

Recommended Dilutions

WB 1:200 - 1:2000

IF/ICC 1:50 - 1:200

ELISA Recommended starting concentration is 1 µg/mL. Please optimize the concentration based on your specific assay requirements.

Immunogen Information

Gene ID

2037

Swiss Prot

O43491

Immunogen

Recombinant fusion protein containing a sequence corresponding to amino acids 1-210 of human EPB41L2 (NP_001186317.1).

Synonyms

4.1G; 4.1-G; EPB41L2

Contact



www.abclonal.com

Product Information

Source

Rabbit

Isotype

IgG

Purification

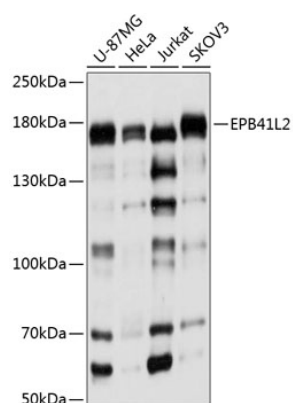
Affinity purification

Storage

Store at -20°C. Avoid freeze / thaw cycles.

Buffer: PBS with 0.01% thimerosal, 50% glycerol, pH7.3.

Validation Data



Western blot analysis of various lysates using EPB41L2 Rabbit pAb (A9101) at 1:1000 dilution.

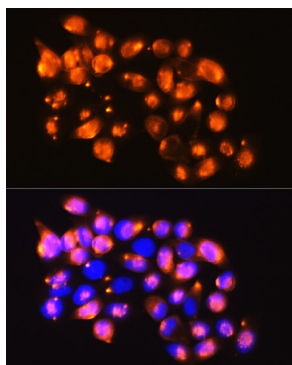
Secondary antibody: HRP-conjugated Goat anti-Rabbit IgG (H+L) (AS014) at 1:10000 dilution.

Lysates/proteins: 25µg per lane.

Blocking buffer: 3% nonfat dry milk in TBST.

Detection: ECL Basic Kit (RM00020).

Exposure time: 5s.



Immunofluorescence analysis of HeLa cells using EPB41L2 Rabbit pAb (A9101) at dilution of 1:100. Blue: DAPI for nuclear staining.