

A9061

Leader in Biomolecular Solutions for Life Science



# MCTS1 Rabbit pAb

Catalog No.: A9061 **2 Publications**

## Basic Information

### Observed MW

20kDa

### Calculated MW

21kDa

### Category

Polyclonal Antibody

### Applications

WB,IF/ICC,ELISA

### Cross-Reactivity

Human,Mouse,Rat

## Background

Predicted to enable translation initiation factor activity. Involved in IRES-dependent viral translational initiation; formation of translation preinitiation complex; and ribosome disassembly. Located in cytosol and plasma membrane. Colocalizes with cytosolic small ribosomal subunit.

## Recommended Dilutions

**WB** 1:500 - 1:2000

**IF/ICC** 1:50 - 1:200

**ELISA** Recommended starting concentration is 1 µg/mL. Please optimize the concentration based on your specific assay requirements.

## Immunogen Information

### Gene ID

28985

### Swiss Prot

Q9ULC4

### Immunogen

Recombinant protein (or fragment). This information is considered to be commercially sensitive.

### Synonyms

MCT1; MCT-1; MCTS1

## Contact

 [www.abclonal.com](http://www.abclonal.com)

## Product Information

### Source

Rabbit

### Isotype

IgG

### Purification

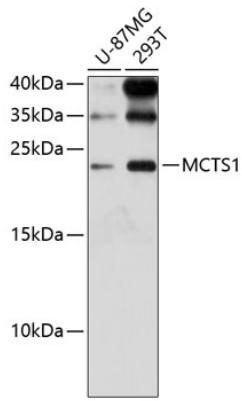
Affinity purification

### Storage

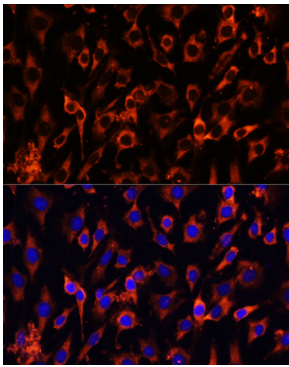
Store at -20°C. Avoid freeze / thaw cycles.

Buffer: PBS with 0.01% thimerosal, 50% glycerol, pH7.3.

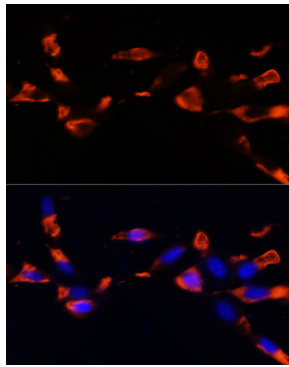
## Validation Data



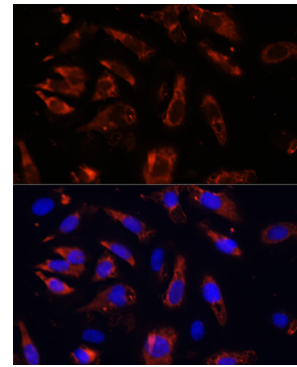
Western blot analysis of various lysates using MCTS1 Rabbit pAb (A9061) at 1:3000 dilution.  
Secondary antibody: HRP-conjugated Goat anti-Rabbit IgG (H+L) (AS014) at 1:10000 dilution.  
Lysates/proteins: 25µg per lane.  
Blocking buffer: 3% nonfat dry milk in TBST.  
Detection: ECL Enhanced Kit (RM00021).  
Exposure time: 90s.



Immunofluorescence analysis of C6 cells using MCTS1 Rabbit pAb (A9061) at dilution of 1:100 (40x lens). Blue: DAPI for nuclear staining.



Immunofluorescence analysis of NIH/3T3 cells using MCTS1 Rabbit pAb (A9061) at dilution of 1:100 (40x lens). Blue: DAPI for nuclear staining.



Immunofluorescence analysis of U-2OS cells using MCTS1 Rabbit pAb (A9061) at dilution of 1:100 (40x lens). Blue: DAPI for nuclear staining.