

A9043

Leader in Biomolecular Solutions for Life Science



RPL35 Rabbit pAb

Catalog No.: A9043

Basic Information

Observed MW

30kDa

Calculated MW

15kDa

Category

Polyclonal Antibody

Applications

WB,IHC-P

Cross-Reactivity

Human,Mouse

Background

Ribosomes, the organelles that catalyze protein synthesis, consist of a small 40S subunit and a large 60S subunit. Together these subunits are composed of 4 RNA species and approximately 80 structurally distinct proteins. This gene encodes a ribosomal protein that is a component of the 60S subunit. The protein belongs to the L29P family of ribosomal proteins. It is located in the cytoplasm. As is typical for genes encoding ribosomal proteins, there are multiple processed pseudogenes of this gene dispersed through the genome.

Recommended Dilutions

WB 1:500 - 1:1000

IHC-P 1:20 - 1:50

Immunogen Information

Gene ID

11224

Swiss Prot

P42766

Immunogen

Synthetic peptide. This information is considered to be commercially sensitive.

Synonyms

L35; uL29; DBA19; RPL35

Contact



www.abclonal.com

Product Information

Source

Rabbit

Isotype

IgG

Purification

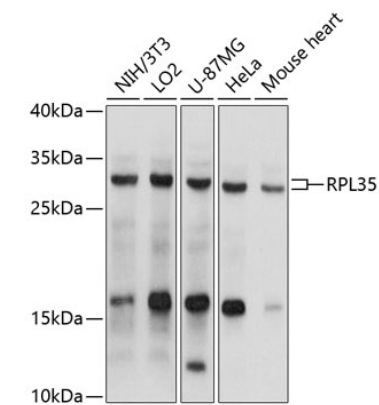
Affinity purification

Storage

Store at 4°C. Avoid freeze / thaw cycles.

Buffer: PBS with 0.02% sodium azide,pH7.3.

Validation Data



Western blot analysis of various lysates using RPL35 Rabbit pAb (A9043) at 1:1000 dilution.
Secondary antibody: HRP-conjugated Goat anti-Rabbit IgG (H+L) (AS014) at 1:10000 dilution.
Lysates/proteins: 25µg per lane.
Blocking buffer: 3% nonfat dry milk in TBST.
Detection: ECL Basic Kit (RM00020).
Exposure time: 5s.