

A9039

Leader in Biomolecular Solutions for Life Science



www.abclonal.com

NUMB Rabbit mAb

Catalog No.: A9039

Recombinant

Basic Information

Observed MW

66kDa

Calculated MW

71kDa

Category

SMab Recombinant Monoclonal
Antibody

Applications

WB,IP,ELISA

Cross-Reactivity

Human,Mouse

CloneNo number

ARC1390

Recommended Dilutions

WB 1:500 - 1:1000

IP 0.5µg-4µg antibody for
200µg-400µg extracts
of whole cells

ELISA Recommended starting
concentration is 1
µg/mL. Please optimize
the concentration
based on your specific
assay requirements.

Contact



www.abclonal.com

Background

The protein encoded by this gene plays a role in the determination of cell fates during development. The encoded protein, whose degradation is induced in a proteasome-dependent manner by MDM2, is a membrane-bound protein that has been shown to associate with EPS15, LNX1, and NOTCH1. Alternative splicing results in multiple transcript variants.

Immunogen Information

Gene ID

8650

Swiss Prot

P49757

Immunogen

Synthetic peptide. This information is considered to be commercially sensitive.

Synonyms

S171; C14orf41; c14_5527; NUMB

Product Information

Source

Rabbit

Isotype

IgG

Purification

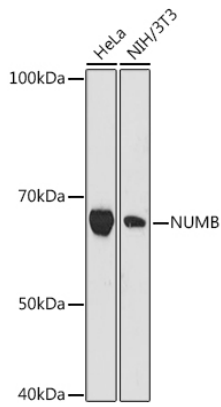
Affinity purification

Storage

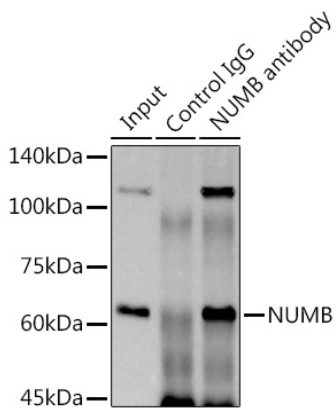
Store at -20°C. Avoid freeze / thaw cycles.

Buffer: PBS containing 50% glycerol and 0.05% BSA, preserved with proclin300 or sodium azide (as specified on the Certificate of Analysis), pH 7.3.

Validation Data



Western blot analysis of various lysates using NUMB Rabbit mAb (A9039) at 1:1000 dilution.
Secondary antibody: HRP-conjugated Goat anti-Rabbit IgG (H+L) (AS014) at 1:10000 dilution.
Lysates/proteins: 25µg per lane.
Blocking buffer: 3% nonfat dry milk in TBST.
Detection: ECL Basic Kit (RM00020).
Exposure time: 180s.



Immunoprecipitation analysis of 300 µg extracts of HeLa cells using 3 µg NUMB antibody (A9039). Western blot was performed from the immunoprecipitate using NUMB (A9039) at a dilution of 1:1000.