

A8928

Leader in Biomolecular Solutions for Life Science



# CCDC6 Rabbit pAb

Catalog No.: A8928

## Basic Information

---

### Observed MW

50kDa

### Calculated MW

53kDa

### Category

Polyclonal Antibody

### Applications

WB

### Cross-Reactivity

Human

## Background

---

This gene encodes a coiled-coil domain-containing protein. The encoded protein is ubiquitously expressed and may function as a tumor suppressor. A chromosomal rearrangement resulting in the expression of a fusion gene containing a portion of this gene and the intracellular kinase-encoding domain of the ret proto-oncogene is the cause of thyroid papillary carcinoma.

## Recommended Dilutions

---

WB 1:500 - 1:1000

## Immunogen Information

---

### Gene ID

8030

### Swiss Prot

Q16204

### Immunogen

A synthetic Peptide of human CCDC6

### Synonyms

H4; PTC; TPC; PTC1; TST1; D10S170; CCDC6

## Contact

---

 [www.abclonal.com](http://www.abclonal.com)

## Product Information

---

### Source

Rabbit

### Isotype

IgG

### Purification

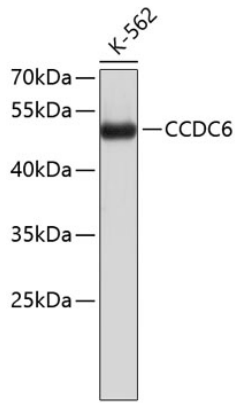
Affinity purification

### Storage

Store at 4°C. Avoid freeze / thaw cycles.  
Buffer: PBS with 0.02% sodium azide, pH7.3.

## Validation Data

---



Western blot analysis of lysates from K-562 cells, using CCDC6 Rabbit pAb (A8928).  
Secondary antibody: HRP-conjugated Goat anti-Rabbit IgG (H+L) (AS014) at 1:10000 dilution.  
Lysates/proteins: 25µg per lane.  
Blocking buffer: 3% nonfat dry milk in TBST.