

A8925

Leader in Biomolecular Solutions for Life Science



BCKDHB Rabbit pAb

Catalog No.: A8925

Basic Information

Observed MW

33kDa

Calculated MW

43kDa

Category

Polyclonal Antibody

Applications

WB,IF/ICC,FC

Cross-Reactivity

Human

Background

This gene encodes the E1 beta subunit of branched-chain keto acid dehydrogenase, which is a multienzyme complex associated with the inner membrane of mitochondria. This enzyme complex functions in the catabolism of branched-chain amino acids. Mutations in this gene have been associated with maple syrup urine disease (MSUD), type 1B, a disease characterized by a maple syrup odor to the urine in addition to mental and physical retardation and feeding problems. Alternative splicing at this locus results in multiple transcript variants.

Recommended Dilutions

WB 1:500 - 1:1000

IF/ICC 1:20 - 1:50

FC 1:20 - 1:50

Immunogen Information

Gene ID

594

Swiss Prot

P21953

Immunogen

A synthetic Peptide of human BCKDHB

Synonyms

E1B; BCKDE1B; BCKDH E1-beta; BCKDHB

Contact



www.abclonal.com

Product Information

Source

Rabbit

Isotype

IgG

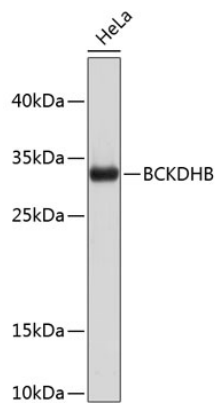
Purification

Affinity purification

Storage

Store at 4°C. Avoid freeze / thaw cycles.
Buffer: PBS with 0.02% sodium azide,pH7.3.

Validation Data



Western blot analysis of extracts of HeLa cells, using BCKDHB antibody (A8925).
Secondary antibody: HRP Goat Anti-Rabbit IgG (H+L) (AS014) at 1:10000 dilution.
Lysates/proteins: 25µg per lane.
Blocking buffer: 3% nonfat dry milk in TBST.