

A8915

Leader in Biomolecular Solutions for Life Science



# ITM2C Rabbit pAb

Catalog No.: A8915

## Basic Information

### Observed MW

30kDa

### Calculated MW

30kDa

### Category

Polyclonal Antibody

### Applications

WB,ELISA

### Cross-Reactivity

Human

## Background

Enables amyloid-beta binding activity. Involved in negative regulation of neuron projection development and neuron differentiation. Located in several cellular components, including Golgi apparatus; lysosome; and perinuclear region of cytoplasm.

## Recommended Dilutions

**WB** 1:500 - 1:2000

**ELISA** Recommended starting concentration is 1 µg/mL. Please optimize the concentration based on your specific assay requirements.

## Immunogen Information

### Gene ID

81618

### Swiss Prot

Q9NQX7

### Immunogen

Recombinant fusion protein containing a sequence corresponding to amino acids 1-220 of human ITM2C (NP\_001012532.1).

### Synonyms

E25; BRI3; E25C; ITM3; BRICD2C; ITM2C

## Contact



[www.abclonal.com](http://www.abclonal.com)

## Product Information

### Source

Rabbit

### Isotype

IgG

### Purification

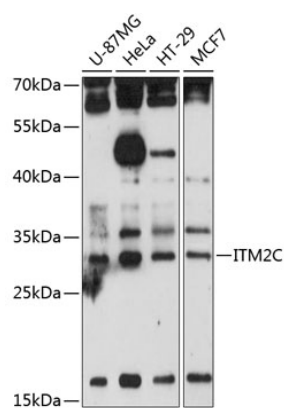
Affinity purification

### Storage

Store at -20°C. Avoid freeze / thaw cycles.

Buffer: PBS with 0.01% thimerosal, 50% glycerol, pH7.3.

## Validation Data



Western blot analysis of various lysates using ITM2C Rabbit pAb (A8915) at 1:3000 dilution.  
Secondary antibody: HRP-conjugated Goat anti-Rabbit IgG (H+L) (AS014) at 1:10000 dilution.  
Lysates/proteins: 25µg per lane.  
Blocking buffer: 3% nonfat dry milk in TBST.  
Detection: ECL Enhanced Kit (RM00021).  
Exposure time: 30s.